



## **Table of Contents**

- WIFI
- WELCOME TO KANTO LODGE
- MESSAGE FROM MANAGER
  - OUR HISTORY
- MISSION AND VISION 374 FSS
  - MISSION AIR FORCE INN
  - GUEST RESPONSIBILITIES
    - HOTEL SERVICES
    - SECURITY AND SAFETY
    - VISITOR SERVICES
    - BASE SERVICES
- ACTIONS TO TAKE / SHELTERING IN PLACE
  - DIALING INSTRUCTIONS
  - EVACUATION MAPS
    - LODGING AREA
    - YOKOTA AB MAP
    - BASE SHUTTLE
- DESIGNATED TOBACCO AREAS
  - HOUSE OF RULES
- GUEST PET POLICY AGREEMENT
  - YOKOTA AB LEADERSHIP



**KANTO LODGE**  
Yokota AB, Japan

# KANTO LODGE

Yokota Air Base



<https://yokota374fss.com/kanto-lodge/>



# Welcome to Kanto Lodge

We are delighted to have the opportunity to serve you. On behalf of the entire team, I extend you a very warm welcome and trust your stay with us will be both enjoyable and comfortable. We carry the Air Force Inn's proud legacy of excellence and are committed to your comfort. Rest with the best!



While you are here, please take advantage of the outstanding services proudly presented by the 374th Force Support Squadron. Should you require additional help or information during your stay with us, please do not hesitate to call our Guest Service team.

John B. Wesley Jr., NF-IV  
Lodging Manager  
Kanto Lodge

# OUR HISTORY



Yokota Air Base (YAB) has a rich history that spans seven decades, with 2010 marking the base's 70th anniversary.

Imperial Japanese Army Air Period: 1940-45

YAB was originally constructed by the Imperial Japanese Army as Tama Airfield which was activated on 15 August 1940. During World War II, it was a training base and secret aircraft test and development center, with the U.S. only learning its existence through reconnaissance in late 1944. As a result, the base suffered minimal damage during World War II. This allowed Americans to use many of YAB's wartime facilities such as the old operations building a structure that survived until fairly recently.

Occupation Period: 1945-51

The first Americans to arrive at YAB - a handful of the 1st Cavalry Division soldiers led by a 1 LT - took possession of the base on 3 September 1945, and Major Benjamin Hayes accepted the surrender sword from Major General Yamaguchi Tsuchio on 6 September. About ten days later, the first American airplanes landed at Yokota: C-46s from the 5th, 6th, 7th and 8th Combat Cargo Squadrons, ferrying supplies and men for the occupation. By the end of 1945, the original runway had become unusable, and for nearly a year construction crews rebuilt and extended the runway for B-29s. During this time, units assigned to YAB flew out of nearby Tachikawa and Johnson Air Bases. On 15 August 1946, YAB AF Commander Major General Kenneth Wolfe arrived in a B-17, followed by 15 A-26s from the 3rd Bomb Group. Soon after, various units began flight operations here, including recon, air rescue and weather.

Dependents began arriving at YAB in August 1946 but had to live in hotels while waiting for on-base housing to be completed. Children initially attended school in Yokota's Chapel. Along with Stars and Stripes, YAB's chief form of information was the base paper then called Third Strike. It was briefly renamed Plane Talk, and then Flight Lines in 1950, Afterburner in the mid-1950s and Fuji Flyer in 1970. FEN Tokyo (now AFN) radio went on the air in September 1945, and though there were on-base movie theaters, there was still no TV at this time. Phone calls home remained a rare luxury for decades.

Korean War Period: 1950-53

At the outbreak of the Korean War in June 1950, Yokota's fortunes changed dramatically. Among the numerous bases in Japan, YAB was chosen as headquarters for the newly formed FEAF Bomber Command and was also home to B-29 squadrons that flew regular missions to Korea. The Yokota-based bombing missions continued for three years, helping to bring about the ceasefire that eventually allowed South Korea to freely develop into the economic powerhouse it is today.

Cold War Period: Post-Korean War to 1965

The Air Force's dominant symbol of the Cold War, SAC, made its appearance at YAB in 1956 when it established a detachment of the 3rd Air Division to handle B-36, B-47 and B-52 bomber rotations. At the same time, YAB had significant fighter, recon and light bomber operations. The 56th WRS chased typhoons from YAB using WB-29s, WB-50s and later WC-130s and WB-47s. Meanwhile, the first C-130s, used for recon (6091st SRS), arrived in April 1961. In 1962, F-102 "Delta Daggers" from the 40th FIS and the YAB flightline were filmed for the Japanese monster movie Mothra, though the F-102 footage was not used.

Since the Korean War and into the present, Yokota's residents have actively cultivated positive relations with our Japanese hosts through open houses, participation in festivals and friendship societies, supporting charities such as orphanages and assisting nearby communities in times of drought and other natural disasters. Local community relations have been an important part of Yokota's history.



## **YOKOTA AIR BASE**

374TH FORCE SUPPORT SQUADRON

# **Our Mission**

## **Taking Care of People**

# **Our Vision**

To elevate the pride of serving our heroes into a legendary culture, one that honors the efforts and sacrifices of our military family.”

# **Priorities**

- Value and serve people
- Level up programs and processes
- Develop a Mission ready community



# MISSION

**Deliver innovative and adaptive Lodging services globally, supporting Airmen, Guardians, and families, to generate combat ready, resilient warfighters.**



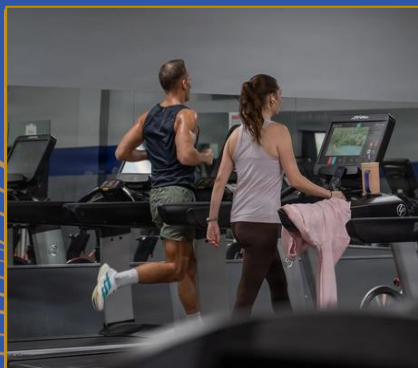
# Guest Responsibilities

## CHECK OUT TIME

- Check-out time is at 11 a.m. unless a late check-out is approved in advance by management. After 11 a.m., you will be charged for another night. If you have any questions, please contact the front desk by dialing 0 from your room.
- All guests must be registered at the front desk. Each registered guest is responsible for the conduct of all other room occupants. Be considerate of other lodging guests by keeping the noise level down at all times. We often have shift workers and travelers trying to get rest throughout the day.
- Lodging guests are expected to protect the room, its furnishings, and other contents from damage. Guests may be charged for the willful misconduct, theft, or loss of items within a room. Please report all maintenance concerns immediately to the front desk.
- Conserve Energy. Turn off television and lights when you are not in the room and unplug all power equipment when not in use.
- Allow housekeepers access to the room. To ensure the health and safety of our guests, housekeepers will enter all rooms on the consecutive day a “Do Not Disturb” is posted. Housekeepers must enter Pet Boarding daily. (IAW AFI 34- 135, Air Force Lodging Program)



# HOTEL SERVICES



## **Fitness Room**

Fitness rooms are provided free to registered guests 24 hours a day, seven days a week. Guest must be 16 years or older to access the fitness rooms on the first floors of Buildings 15 and 120.

## **Front Desk**

Kanto Lodge front desk is open 24 hours a day, seven days a week. If you need special assistance, please ask one of guest service representatives by dialing 0. They will be happy to assist you.



## **Housekeeping**

Housekeeping service includes general room cleaning, bed making, trash removal and linen replacement. Housekeeping **MUST** enter the room once every 3 days and complete full-service cleaning every 7 days. Pet rooms will be entered **DAILY**.

## **Internet Service**

Internet Wi-Fi is provided free in all buildings. Free Wi-Fi is also available at the library, dining facility and the Yujo Community Center. Allied Telesis (Internet Service Provider) 97-1 (415) 692-8302 · Bldg. 570 (YCC)





# HOTEL SERVICES



## Lost and Found

Lost and found articles will be kept for 30 days. Positive identification is required to claim items. Unclaimed lost and found articles will be disposed of monthly in accordance with local instructions.

All food items left in transient quarters after checkout will be disposed immediately in accordance with environmental and health regulations. Please check all drawers, closets, bathrooms, kitchen cabinets, etc. before leaving the room.

## Ice Machines

Ice machines are located in the vending machine rooms on each floor in Buildings 15, 20 and 30. Building 120 ice machine is located in the laundry room on the first floor.



## Laundry / Dry Cleaning

Use of washers and dryers are provided on each floor of Buildings 15, 20 and 120. You may purchase laundry soap and dryer sheets at the front desk or from the laundry vending machine.



# Security Forces and Safety

## Passports & Visas

Please ensure that your Passport, visa, and all other necessary travel documents are valid and current.

## Base Security Forces:

Emergency Phone Number ----- 911  
Security Forces -----225-7227  
Fire Department -----225-7290  
Investigation -----225-7025  
Resource Protection/Crime Prevention ----225-7244

## Base Medical Facility

374th Medical Group  
Bldg. 4408, located on the East Side  
Appointment Line -----225-8864  
Urgent Care -----225-7740  
Suicide Hotline ----- 1-800-273-TALK(8255)

## Fussa Facilities

Fussa Police Station -----042-551-0110  
3-25 Kamidaira, Fussa, Tokyo, Japan  
Fussa Fire Department -----042-552-0119  
1072 Fussa-shi, Fussa, Tokyo, Japan  
Taisei Hospital -----042-551-1311  
871 Fussa  
Fussa Hospital -----042-551-1111  
1-6-1 Kamidaira, Fussa

## Pass and Registration

Supply Gate -----225-8914 / 225-7510  
Contact Pass and Registration for vehicle registration/deregistration, retracted area badge issuance, driver's license issuance, Japanese contractor passes, houseguest passes and fingerprints.



# Visitor Services

*\*For calls to off-base (local) numbers from Room ph. (DSN) dial 99 + phone number.*

*\*For calls to DSN numbers from Room ph. (DSN) dial 97 + phone number.*

*\*For calls to US numbers from Room ph. (DSN) dial 98 + 001 + 1 + area code + phone number.*

## **Fussa Gate ----- 225-7606/8415**

The 374th Security Forces Squadron is the point of contact for visitors, special events and law enforcement procedures. Special functions, student passes and daily visitor passes are coordinated with SFS.

## **Immigration**

Off Base 5 a.m.-10 p.m. 225-7818

## **Emergency Phone Numbers**

On Base Emergency Fire/Police ----- 911

Off-Base Emergency ----- + 99 - 119

Security ----- 97-225-7227

## **Gate/Curfew Hours**

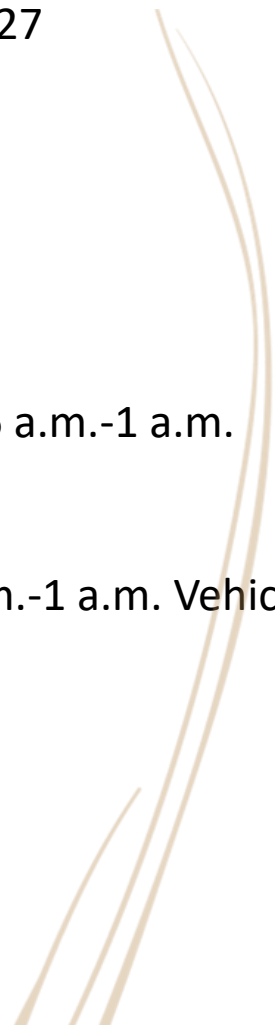
East Gate: Sun-Sat - 5 a.m.-1 a.m.

Terminal /West: Sun-Sat / 24 hours

Fussa Gate / Sun-Sat / Pedestrian Traffic 6 a.m.-1 a.m.

Vehicle 6 a.m.-10 p.m.

Supply / Mon-Fri / Pedestrian Traffic 6 a.m.-1 a.m. Vehicle 6 a.m.-6 p.m.





# BASE SERVICES

## **Hospital/Clinic** Bldg. 4408

Appointments 225-8864

Tri-Care 225-6478

The 374th Medical Group is located on the east side.

Call 225-8864 for an appointment.

Patients needing care after normal duty hours can be seen in the emergency room on a walk-in basis.

## **Information, Tickets & Travel** Bldg. 327

Travel Agency/Tour Sign up • 227-7083/7084 Local Bus Tours • 227-4437

Night Flight Desk • 225-6999/3

## **Kennel Facility** Bldg. 4066

[Pet Care Center | Yokota FSS](#)

The center offers boarding for dogs and cats.

Please call to reserve a spot for your furry family member, as the Kanto Lodge does not have pet-friendly units at this time.

## **Stars and Stripes, Pacific** Bldg. 4330

225-4505

This is our daily newspaper. Call 225-4505 to start your home delivery.

## **Thrift Shop (YOSC) Yokota Spouses Club** Bldg. 3260

[yscthriftstorecoordinator@gmail.com](mailto:yscthriftstorecoordinator@gmail.com)

225-6955 (Taiyo Center)

If you're looking for gently used items at a great price, check out the Yokota Officers' Spouses' Club Thrift Shop. It is located on the West side, inside the Taiyo. It is open to everyone.

## **Vehicle Retail Lot** Bldg. 327

225-7713

[Yujo Virtual Lemon Lot](#)

The 374th Force Support Squadron provides a used car resale lot located adjacent to Building 120. Sellers must obtain a permit from the Yujo Community Center.

## **Veterinary Clinic** Bldg. 4145-C

225-4363

[Yokota Air Base VTF](#)

All pets must be registered. Please call for an appointment.

## **AAFES Service Concessionaires**

[shopmyexchange.com/store-locator/yokota-main-exchange](http://shopmyexchange.com/store-locator/yokota-main-exchange)



### **Yokota Main Exchange**

BLDG. 570

#### **Store Hours:**

Mon-Sat 1000-2000

Sun 1000-1900

#### **Phone:**

[469-375-7519](tel:469-375-7519) or dial 042-552-2510 - Base Operator

Press "0" and ask to be transferred to the Main Exchange



# ACTIONS TO TAKE / SHELTERING IN PLACE

## Did you know you can prevent fires?

- Do not smoke in bed.
- Do not store highly flammable liquids (gasoline, charcoal lighter, flammable paint, etc.) in your room.
- Do not use unauthorized cooking or heating devices in your room.
- Do not place charcoal grills within 15 feet of the building.
- Do not leave cooking equipment unattended when in use.
- Do not place hot appliances such as irons, coffee pots, etc. in lockers or drawers.
- Do not overload electrical circuits.
- We appreciate your cooperation in keeping the guests and Kanto Lodge safe and secure.

## When you cannot leave your room...

- Turn off the air conditioner to prevent smoke from being sucked in.
- Soak towels, sheets and blankets and stuff them in the crack beneath the doors.
- Call the hotel operator to report your location. If you can't reach them, dial 911.
- Above all, remain calm.





## Evacuation

- If you are required to evacuate the hotel, you will be notified through the phone system or by the sounding of the general alarm.
- Proceed to the nearest exit.

## If exits are not accessible...

- Return to your room.
- Above all, remain calm, and do not allow yourself to panic.

# Warning Signals

• Signal	• Meaning	• Action
<ul style="list-style-type: none"> <li>• 3–5-minute steady tone or base sirens, vehicle sirens or the Giant Voice warning system</li> </ul> 	<ul style="list-style-type: none"> <li>• <b>Alert Signal</b></li> <li>• Imminent Peacetime Emergencies Only (Typhoon, Earthquake, Flash Flood, Volcanic)</li> </ul>	<ul style="list-style-type: none"> <li>• Monitor radio, TV, Giant Voice or sound trucks for instructions</li> </ul>
<ul style="list-style-type: none"> <li>• 3–5-minute wavering tone on base sirens, vehicle sirens or Giant Voice warning system</li> </ul> 	<ul style="list-style-type: none"> <li>• <b>Attack Warning</b></li> <li>• Take imminent shelter or other protective action</li> </ul>	<ul style="list-style-type: none"> <li>• Actual attack is imminent or in progress</li> </ul>
<ul style="list-style-type: none"> <li>• 3-30 second tones with 30 second pauses on base sirens, vehicle sirens or Giant Voice warning system</li> </ul> 	<ul style="list-style-type: none"> <li>• <b>Recall</b></li> </ul>	<ul style="list-style-type: none"> <li>• All military and designated civilian personnel report to their duty station</li> </ul>
<ul style="list-style-type: none"> <li>• Steady tone (not to exceed 15 second duration) on base sirens, or Giant Voice warning system</li> </ul> 	<ul style="list-style-type: none"> <li>• <b>Test Signal</b></li> </ul>	<ul style="list-style-type: none"> <li>• Take no action</li> </ul>



# DIALING INSTRUCTIONS

## Telephone Fees and Charges

**TOLL FREE CALLS ARE NOT FREE!**

*\*Please note that the rates shown are approximate cost. Call charges may vary depending on the destination.*

Calls to....	Line Access Fee	Cost Per Minute
On base (via DSN and room-to-to)	\$0	\$0
Off base within Japan	\$0	\$0
Tool free calls (1-800/888/877/866/855)	\$0.50	\$0.35
Direct-dialed calls to the United States	\$0.50	\$0.35
Credit card /calling card (AT&T, MCI, Spirit, etc.)	\$0.25	\$0.35
International (other than United States)	\$2.00	\$1.95

## Dialing Out

Emergencies	911
Room to Room	Room Number
Front desk	0
Base Operator	97 + 0
On Base	97 + XXX + XXXX
Base Housing	97 + 1 + XXX + XXX + XXXX
Off Base	99 + Number
DSN (PACAF)	97 + DSN Number
DSN (CONUS)	97 + 312 + Number
DSN (ALASKA)	97 + 317 + Number
DSN (EUROPE)	97 + 314 + Number

## Receiving Calls

On Base & PACAF DSN	224+ 2002 + # + Room Extension + #
CONUS DSN	315 + 224 + 2002 + # + Room Extension + #
Commercial	011 + 81 + 42 + 507 + 6533 + # + Room extension + #
Local Cell Phone	# + 042-507-6533



# EVACUATION MAPS

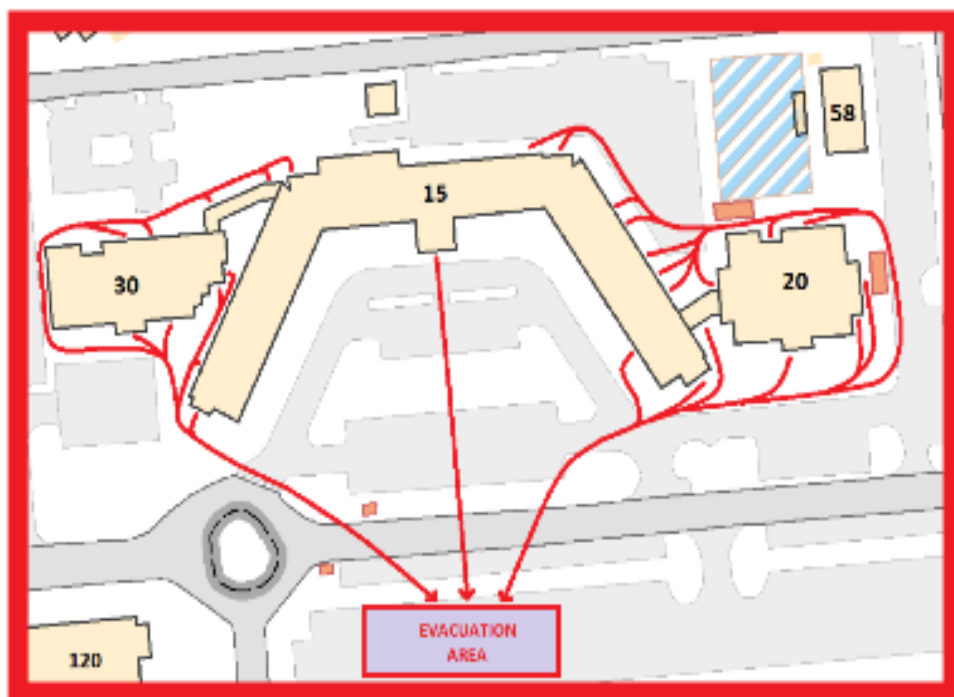
**Do not use Elevators in an Emergency!**



## **FIRE EVACUATION PLAN FOR BUILDING 20**

**In case of a fire, evacuate to designated area:**

**Dormitory Parking Lot  
(Across the Street from the  
Front Entrance of Building 15)**



# EVACUATION MAPS



**Do not use Elevators in an Emergency!**

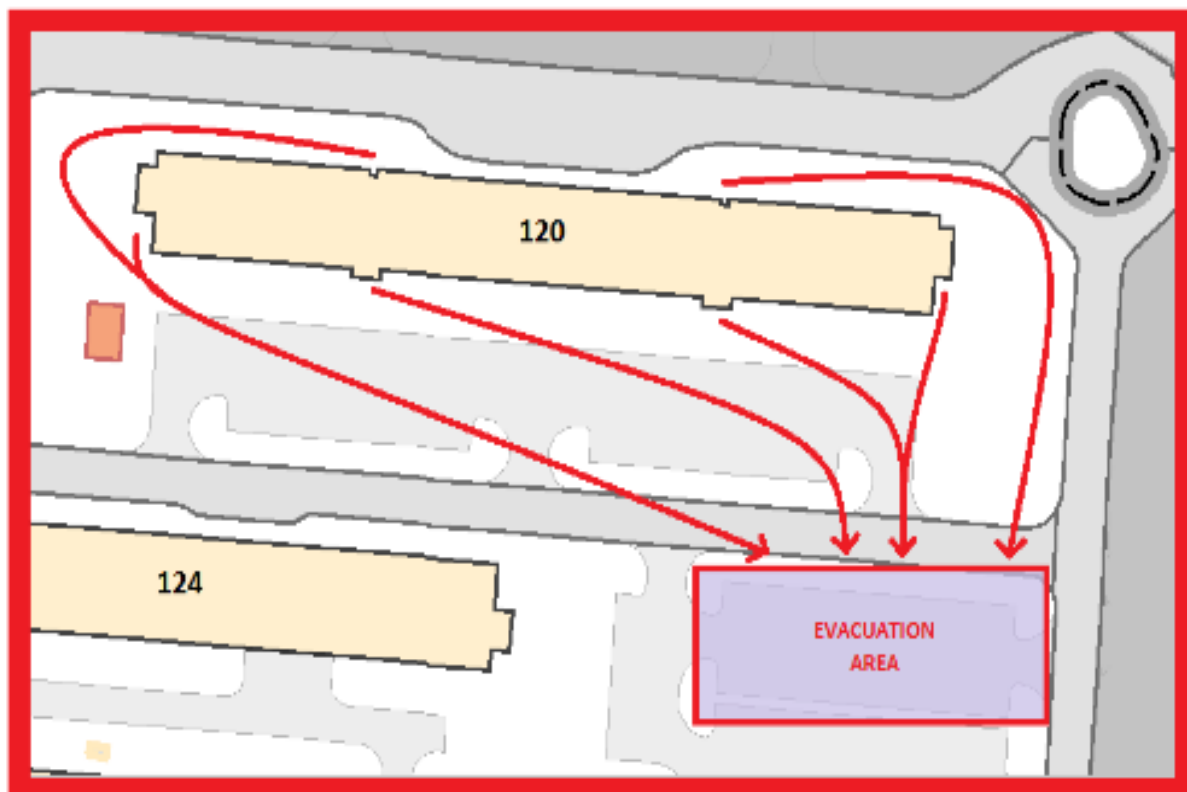


## **FIRE EVACUATION PLAN FOR BUILDING 120**

**In case of a fire, evacuate to designated area:**

**P.O.V. Resale Lot**

**(South Side of Building 120)**



# EVACUATION MAPS



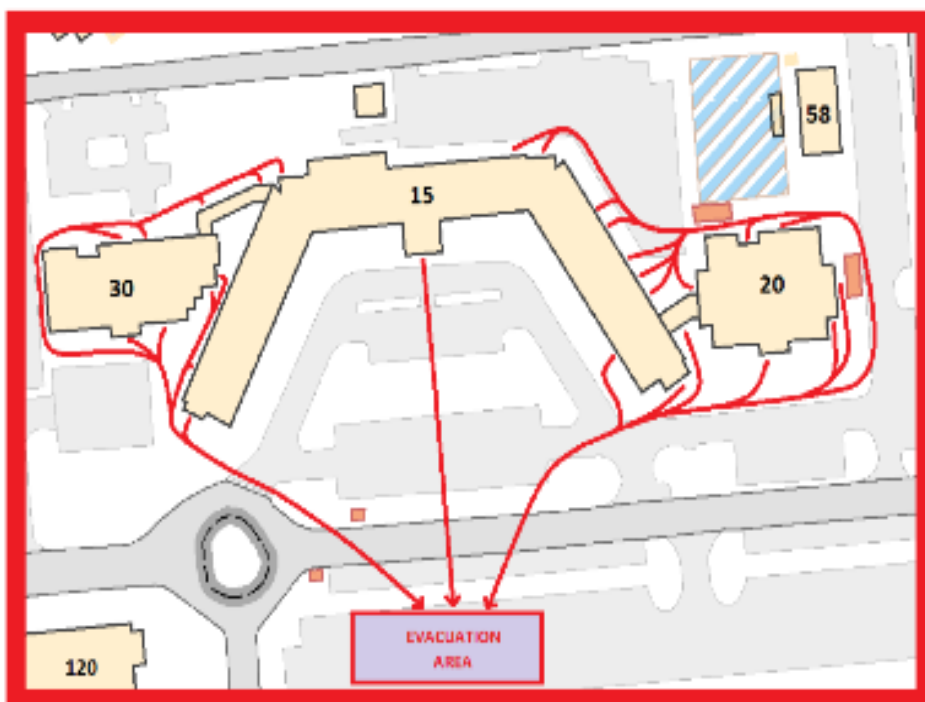
Do not use Elevators in an Emergency!



## FIRE EVACUATION PLAN FOR BUILDING 30

In case of a fire, evacuate to designated area:

**Dormitory Parking Lot  
(Across the Street from the  
Front Entrance of Building 15)**





# EVACUATION MAPS

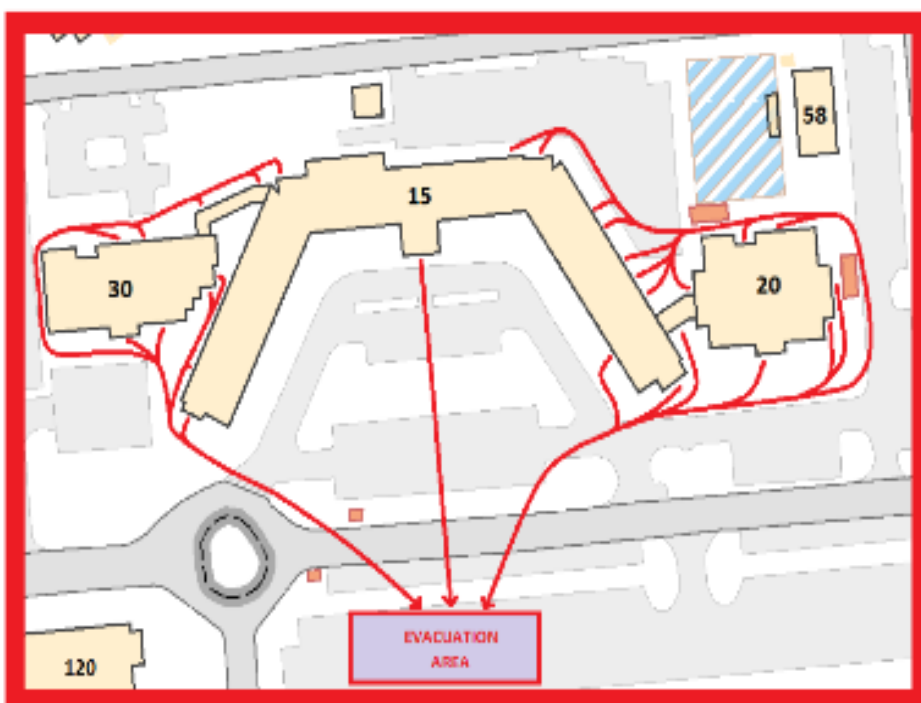
Do not use Elevators in an Emergency!



## FIRE EVACUATION PLAN FOR BUILDING 15

In case of a fire, evacuate to designated area:

**Dormitory Parking Lot  
(Across the Street from the  
Front Entrance of Building 15)**





# LODGING AREA ACCESS

## YOKOTA LODGING MAP





# YOKOTA AIR BASE MAP

[Facility Map | Yokota FSS](#)

Click to Download

### 374 FSS RESTAURANTS

- ▼ Bangkok Express, Tomodachi Lane.....20
- ▼ Charlie T's.....46
- ▼ Chotto.....24
- ▼ Cibi's Grill & Bar.....41
- ▼ Mediterranean Bites, Naga Community Center.....20
- ▼ Rikkuhachi's, Kanto Lodge.....21
- ▼ Rikkuhachi's, Enticed Club.....46
- ▼ Rice & Grill.....75
- ▼ Route 16.....25
- ▼ Samsui Cafe/Flight Kitchen.....28
- ▼ Samsui Bakery.....49

### OTHER PLACES OF INTEREST

- AAFFS Garage.....10
- AAFFS Movie Theater.....77
- AAFFS Warehouse.....60
- Almondz AFIC.....17
- ▼ AMC Terminal.....13
- Burger King.....36
- Car Rental/Key Copying.....14
- Commodity Bank, Navy Federal Credit Union.....33
- Dental & Mental Health Clinics.....78
- Sales.....14
- East Chapel.....70
- Finance Office.....17
- Fire Stations.....9
- Friendship Chapel.....33
- Human Resources Office.....54
- Hospital.....76
- Housing Office.....50
- Japanese Consensus Store.....82
- Japanese Dining Hall.....52
- JR Meidai Elementary School.....71
- Landmarks.....15
- Maintenance Office.....83
- Pass & ID Office.....81
- Police Station (Security Forces).....39
- Red Cross.....40
- Self Help Store.....51
- Thrift Shop.....3
- USO.....37
- Veterinary Clinic.....55
- Visitors Center.....30
- WVCC Office.....58
- ▼ YCCC (AAFFS Food Court/Barber Shop/UX Dry Cleaning/Commissary/Military Clothing Sales/Salon).....58
- Yokota High School.....54
- Yokota Middle School.....54
- Yokota West Elementary School.....8

## FORCE SUPPORT FACILITY GUIDE

### 374 FSS FACILITIES

- ▼ Air Club Flight Training.....74
- ▼ Arts & Crafts Center.....29
- ▼ Auto Health Shop.....42
- ▼ Building 316.....34
- ▼ Civilian Personnel Education & Training Section
- ▼ FSS Training Institute
- ▼ Military Personnel Section/ Customer Support
- ▼ NAF HR
- ▼ Plans Readiness/Mortuary Affairs
- ▼ Relieved Club.....45
- ▼ Family Child Care Office.....30
- ▼ ITF (Information, Tickets & Travel).....13
- ▼ ITF Flight Post.....22
- ▼ Kanto Lodge.....47
- ▼ Kibo CDC.....67
- ▼ Library.....16
- ▼ Marketing Operations Magazine.....16
- ▼ Military & Family Readiness Center
- ▼ Career Assistance Seminar
- ▼ Fast Times Annex Center.....3
- ▼ Sakana Outdoor Pool.....43
- ▼ MX Nuts Shop.....24
- ▼ Samura Training Grounds.....44
- ▼ Slate Park.....72
- ▼ Taino Community Center.....4
- ▼ Tree Center.....49
- ▼ Temporary Lodging Facility.....75
- ▼ Tomodachi Lanes Bowling Center.....19
- ▼ Vehicle Operations/Car Wash.....11
- ▼ Williamson School Age Care.....6
- ▼ Yokota Golf Center.....65
- ▼ Youth Center.....66
- ▼ Naga Community Center
- ▼ ITF (Information, Tickets & Travel)
- ▼ Nightly Flight Travel Agency
- ▼ Williams Technical Service Insurance
- ▼ Yams CDC.....48
- ▼ Yams Golf & Lodge
- ▼ Wi-Fi Areas

### OVERRRUN ROADS OPERATION HOURS

**SOUTH**  
Open 24 Hours

**NORTH**  
Closed  
North overrun road closure includes interlocking path.

### GATE OPERATION HOURS

**EAST GATE**  
Sun-Thu + 5 a.m.-10 p.m.  
Fri-Sat + 5-1 a.m.

**FUSSA GATE**  
Sun-Thu + 6 a.m.-10 p.m.  
Fri-Sat + 6-1 a.m.  
Through Traffic + 6 a.m.-1 a.m.  
Visitor Center + 2-10 p.m.

**TERMINAL & WEST GATE**  
Sun-Sat + 24 Hours  
Visitors who depart Narita on the 7 p.m. shuttle will have their passes issued at the Terminal Gate.

**SUPPLY GATE**  
Mon-Fri  
Vehicle Traffic + 6 a.m.-4 p.m.  
Pedestrian Traffic + 6 a.m.-10 p.m.  
Closed Weekends and Japanese End of Year Holidays.

**HOLIDAYS & FAMILY DAYS**

**EAST & FUSSA GATE**  
Pedestrian & Vehicle Traffic  
6 a.m.-10 p.m.

**TERMINAL & WEST GATE**  
24 Hours

**SUPPLY GATE**  
Pedestrian & Vehicle Traffic  
6 a.m.-4 p.m.  
Vehicle Search Pit + 6 a.m.-2 p.m.

FOR A DIGITAL MOBILE MAP, CHECK OUT [YOKOTAFSS.COM/MAP](http://YOKOTAFSS.COM/MAP)

# KANTO EXPRESS ON BASE TRANSPORTATION

<https://yokota374fss.com/kanto-lodge/>



# DESIGNATED TOBACCO AREAS





# House Rules

[Kanto Lodge House Rules.pdf](#)

Click to Download



---

## KANTO LODGE - GUEST CHECK-IN ACKNOWLEDGMENT & HOUSE RULES

*Please initial each policy and sign below to acknowledge understanding.*

### \_\_\_\_\_ Check-Out Time

Check-out is at **1100 hours**. A **late check-out fee equivalent to one (1) night's charge** applies after 1100. If an extension is required, I will notify the Front Desk as early as possible. Extensions are subject to availability and management approval.

### \_\_\_\_\_ Failure to Check-Out

Guests who fail to check out on time may have their personal property removed from the room. **Kanto Lodge is neither responsible nor liable for items left in the room after check-out.**

### \_\_\_\_\_ Non-Smoking Policy

All guestrooms are 100% **Non-Smoking**. A **\$150 cleaning fee** applies for violations; additional charges may apply for any other damages occur.

### \_\_\_\_\_ Fire Safety / Open-Flame Prohibition

For safety reasons, **open-flame items are prohibited in all guestrooms**, including candles and incense. Violations of this policy may result in additional fees or removal from the facility.

### \_\_\_\_\_ Room Entry / Do Not Disturb Policy

In accordance with **AFMAN 34-135, para. 1.5.3**, Rooms displaying **"Do Not Disturb"** for **three (3) consecutive days** will be entered on the third day by Kanto Lodge staff for safety, health and welfare checks.

### \_\_\_\_\_ Room Condition & Damage Responsibility

I am financially responsible for items in my room and may be charged for **damaged, missing, or destroyed property**. Furniture and fixtures may not be moved without Kanto Lodge management approval.

### \_\_\_\_\_ Perishable Items & Lost and Found

Any perishable items left in room at check-out will be discarded the same day. **Lost and Found** items are held for **30 days**; guests are responsible for all shipping costs.

### \_\_\_\_\_ Guest Responsibility

I acknowledge responsibility for the conduct and actions of my **guests and/or family members** during my stay.

### \_\_\_\_\_ Extended Stay Billing (15+ Days)

For stays of **15 days or longer**, outstanding room charges will be automatically billed to the credit card on file on the **15th day** unless approved otherwise by Kanto Lodge management.

### \_\_\_\_\_ Quiet Hours

Quiet hours are observed from **2200-0700**. Guests are expected to maintain reasonable noise levels.

### \_\_\_\_\_ Temporary Lodging Facility (TLF) Kitchen Use

TLF kitchen items must be **washed/cleaned prior to check-out**. Dishwashing is not included in housekeeping; **additional cleaning fees up to one night's room rate may apply.**

Print Name \_\_\_\_\_ Signature \_\_\_\_\_ Date \_\_\_\_\_



# Pet Policy Agreement

[Pet Policy Agreement.pdf](#)

Click to Download



## Guest Pet Policy Agreement

Dear Valued Guest:

We are delighted to provide lodging for you and your pet(s) in our designated pet VQ or TLF quarters. To ensure a comfortable stay, specific rules must be adhered to during your visit. By signing this agreement, you agree to the following:

\_\_\_\_\_ Only cats and dogs are allowed (maximum of 2 pets), unless the Lodging Manager grants an exception on a case-by-case basis.

\_\_\_\_\_ A **\$10 nightly pet fee** will be added to the lodging rates. Additional cleaning fees may apply if your pet damages furniture or has accidents in the room.

\_\_\_\_\_ Ensure your pet is safely placed in the provided pet cage or your personal pet container when leaving them unattended in the room.

\_\_\_\_\_ Avoid leaving the "Do Not Disturb" sign on your door when you're away from your TLF unit, **as housekeeping will enter daily.**

\_\_\_\_\_ AF Inns holds no responsibility for your pet's welfare; owners are fully accountable for their pet's safety and care.

\_\_\_\_\_ Pets must be vaccinated, and shot records must be provided at check-in.

\_\_\_\_\_ Pets are prohibited from sitting directly on furniture or bedding.

\_\_\_\_\_ Lodging towels or linens cannot be used to bathe pets.

\_\_\_\_\_ Pets are not permitted in other facilities or on the premises outside of designated areas.

\_\_\_\_\_ Each pet must wear a collar labeled with the owner's name and be leashed when outside the facility.

\_\_\_\_\_ Excessive noise or disturbances caused by your pet may lead to a requirement to kennel them off base.

\_\_\_\_\_ Owners must clean up and properly dispose of their pet's waste.

\_\_\_\_\_ Failure to follow these rules may result in the removal of both you and your pet from lodging.

**By signing this agreement before checking in, you acknowledge and accept these terms.**

Room Number: \_\_\_\_\_

Guest Signature: \_\_\_\_\_

Departure Date: \_\_\_\_\_

Guest Name (Print): \_\_\_\_\_

# BASE SHUTTLE



## Base Shuttle

Click to enter site

## FSS SHUTTLE SCHEDULE



Visit [Yokota374FSS.com/vehicle-operations](http://Yokota374FSS.com/vehicle-operations) for complete shuttle schedule.

### HANEDA SCHEDULE

MON-SUN  
\$20 All Ages

TO HANEDA	Bus #1	Bus #2
DEPARTS LONG TERM PARKING LOT	11 a.m.	2:30 p.m.
DEPARTS KANTO LODGE	11:15 a.m.	2:45 p.m.
ESTIMATED ARRIVAL	1:45 p.m.	5:15 p.m.
TO YOKOTA	Bus #1	Bus #2
DEPARTS TERMINAL 1	4:30 p.m.	8 p.m.
DEPARTS TERMINAL 3	5 p.m.	8:30 p.m.
ARRIVES AT KANTO LODGE	7:30 p.m.	11 p.m.
ARRIVES AT LONG TERM PARKING LOT	7:40 p.m.	11:10 p.m.

### NARITA SCHEDULE

MON-SUN  
\$40 Ages 13 & Up, \$30 Ages 12 & Under

TO NARITA	Bus #1	Bus #2
DEPARTS LONG TERM PARKING LOT	9:45 a.m.	11:45 a.m.
DEPARTS KANTO LODGE	10 a.m.	12 p.m.
ESTIMATED ARRIVAL	1:30 p.m.	3:30 p.m.
TO YOKOTA	Bus #1	Bus #2
DEPARTS TERMINAL 1	5 p.m.	7 p.m.
ARRIVES AT KANTO LODGE	8 p.m.	10 p.m.
ARRIVES AT LONG TERM PARKING LOT	8:15 p.m.	10:15 p.m.

**NEW**

### SHINJUKU SHUTTLE

(Tokyo Metropolitan Government Building)  
SAT/SUN/HOL • \$10 All Ages

TO TMGB	Bus #1	Bus #2
DEPARTS KANTO LODGE	9:30 a.m.	3 p.m.
ESTIMATED ARRIVAL	11:10 a.m.	4:45 p.m.
TO YOKOTA	Bus #1	Bus #2
DEPARTS TMGB	11:15 a.m.	5 p.m.
ESTIMATED ARRIVAL	1 p.m.	7 p.m.

\*Scan the QR Code for the map pin of the TMGB Bus Parking Lot.



No reservations necessary. Payments accepted in yen or U.S. dollars. Personal checks and credit cards are not accepted. Pets, smoking, and drinking alcoholic beverages are prohibited. Military, non-military, SOFA, and non-SOFA individuals can use this service. Non-SOFA individuals will need a certificate of sponsorship if riding unaccompanied.



## Shuttle Rules

- US dollars or Yen ONLY (No checks or credit cards)
- If your flight arrives at Narita Terminal 2, take the free airport shuttle to bus stops 8 or 18 at Terminal 1.
- Children under 36 months may ride free if not occupying a seat. Free infant riders are limited to one carry-on piece of luggage. Additional luggage is considered excess and charges will apply.
- Seating is on a first come, first served basis. Boarding time is 30 minutes prior to departure.
- Each ticket holder is authorized two pieces of luggage (one large and one medium) and one carry-on bag. Excess or oversized luggage, larger than 62 inches total (W+H+L), is charged and additional fee per piece and is transported on a space available basis.
- Pets, smoking and drinking alcohol beverages are prohibited on all shuttles.
- \*Shuttles operate daily except on Christmas Day and New Year's Day and during inclement weather.

# 374TH LEADERSHIP

## COL. RICHARD F. MCELHANEY



Col. Richard F. McElhane is the Commander, 374th Airlift Wing and the Installation Commander, Yokota Air Base, Japan. As the installation host, the 374th Airlift Wing supports the headquarters for U.S. Forces Japan, Fifth Air Force, the Japan Air Self-Defense Force Air Defense Command, HQ, United Nations Command-Rear, 58 tenant organizations and over 11,000 U.S. and Japanese base personnel. Col. McElhane is responsible for 18 squadrons in the Department of Defense's only tactical airlift wing in the Pacific theater with Airmen stationed in Japan, Singapore, and Australia.

He is the Senior Airfield Authority for Yokota's runway and the largest U.S. controlled airspace outside of the U.S. with 75,000 operations per year. As the Western Pacific airlift hub, Yokota AB provides mission-ready forces and base operating support to guarantee U.S. forward presence and crisis response with a \$224 million operating budget supporting \$12 billion of infrastructure.

Col. McElhane entered the Air Force in May 2000 after receiving his commission as a Distinguished Graduate through ROTC from Mississippi State University. He completed undergraduate pilot training in 2002 and served as a specialized undergraduate pilot training instructor, flight commander, assistant director of operations, director of staff, Commander's Action Group deputy director, standards and evaluations division chief, and C-130 E/H Hercules and T-1 Jayhawk evaluator pilot.

He also held positions in Major Commands and Joint roles, including Headquarters Pacific Air Forces current operations division chief and deputy executive assistant for the U.S. Indo-Pacific Combatant Commander. Col. McElhane brings in extensive experience in the U.S. Indo-Pacific area of responsibility from his assignments at Joint Base Pearl Harbor- Hickam and Camp Smith, Hawaii, and his previous tour at Yokota AB as the 374th Operations Support Squadron commander. Prior to this assignment, he was the commander of 36th Contingency Response Group, Andersen Air Force Base, Guam.

Col. McElhane is a command pilot with more than 3,800 hours in the C-130E/H/J, T-1, T-44 Pegasus, and Cessna T-37 Tweet with 190 combat missions in support of Operations ENDURING FREEDOM, IRAQI FREEDOM, and NEW DAWN.

### EDUCATION

2000 Bachelor of Arts and Science, Economics, Mississippi State University, Miss. (Distinguished Graduate) 2000 Aerospace Basic Course, Maxwell Air Force Base, Ala.

2006 Squadron Officer School, Maxwell AFB, Ala. (Top Third).

2008 Master of Aeronautical Science, Embry-Riddle University, Prescott, Ariz.

2014 Master of Military Operational Arts and Science, Air Command and Staff College, Maxwell AFB, Ala. (Academic Distinction).

2022 Master of Strategic Studies, Joint Warfighting Studies, Air War College, Maxwell AFB, Ala. (Academic Distinction).

## **ASSIGNMENTS**

1. June 2000 – June 2001, Assistant Chief of Wing Scheduling, 33rd Operations Support Squadron, Eglin Air Force Base, Fla.
2. June 2001 – March 2002, Student, Undergraduate Pilot Training, Columbus AFB, Miss.
3. March 2002 – October 2002, Student, Joint Flying Training, Naval Air Station Corpus Christi, Texas
4. October 2002 – September 2006, Central Scheduler and Executive Officer, C-130E/H Aircraft Commander, 50th Airlift Squadron, Little Rock AFB, Ark. (September 2003 – February 2004, Tactics Officer and Copilot, Unit, Al Udeid Air Base, Qatar) (July 2004 – October 2004, Copilot, Unit, Manas AB, Kyrgyzstan) (January 2005 – March 2005, Copilot, Unit, Ali Al Salem AB, Kuwait) (December 2005 – April 2006, Aircraft Commander, Unit, Balad AB, Iraq.
5. September 2006 – February 2007, Student, T-1 Pilot Instructor Training, 99th Flight Training Squadron, Randolph AFB, Texas.
6. February 2007 – April 2010, Flight Commander, Assistant Director of Operations, Commander's Action Group Deputy Director, and T-1 Evaluator Pilot, 14th Operations Group, Columbus AFB, Miss.
7. April 2010 – June 2013, Director of Staff and Chief, Operations Group Standards and Evaluations, C-130E/H Evaluator Pilot, 19th Operations Group, Little Rock AFB, Ark. (October 2010 – January 2011, Aircraft Commander and Assistant Director of Operations, Unit, Balad AB, Iraq) (September 2011 – November 2011, Instructor Pilot and Assistant Director of Operations, Unit, Ali Al Salem AB, Kuwait)
8. June 2013 – June 2014, Student, Air Command and Staff College, Maxwell AFB, Ala.
9. June 2014 – June 2017, Deputy Chief and Chief, Current Operations Division, Headquarters Pacific Air Forces, Joint Base Pearl Harbor-Hickam, Hawaii
10. June 2017 – June 2019, Commander, 374th Operations Support Squadron, Yokota Air Base, Japan.
11. June 2019 – June 2021, Deputy Executive Assistant to the Commander, United States Indo-Pacific Command, Camp Smith, Hawaii.
12. June 2021 – June 2022, Student, Air War College, Maxwell AFB, Ala.
13. June 2022 – June 2024, Commander, 36th Contingency Response Group, Andersen AFB, Guam.
14. July 2024 – Present, Commander, 374th Airlift Wing, Yokota AB, Japan

## **SUMMARY OF JOINT ASSIGNMENTS**

1. June 2019 – June 2021, Deputy Executive Assistant to the Commander, United States Indo-Pacific Command, Camp Smith, Hawaii, as a lieutenant colonel
2. June 2022 – June 2024, Deputy Commander, Joint Task Force Presidential Support, United States Indo-Pacific Command, Camp Smith, Hawaii, as a colonel.
3. December 2023 – June 2024, Deputy Dual Status Commander, Defense Support of Civil Authorities West, United States Indo-Pacific Command, Camp Smith, Hawaii, as a colonel.

## **FLIGHT INFORMATION**

Rating: Command Pilot Flight hours: 3,800

Aircraft flown: C-130E/H/J, T-1, T-44 and T-37

## **MAJOR AWARDS AND DECORATIONS**

- Legion of Merit
- Defense Meritorious Service Medal
- Meritorious Service Medal with three oak leaf cluster
- Air Medal with seven oak leaf clusters
- Aerial Achievement Medal with two oak leaf clusters
- Joint Service Commendation Medal with oak leaf cluster
- Air Force Commendation Medal with two oak leaf clusters
- Joint Service Achievement Medal with oak leaf cluster
- Air Force Achievement Medal with two oak leaf clusters
- Army Achievement Medal
- Air Force Combat Action Medal

## **EFFECTIVE DATES OF PROMOTION**

Second Lieutenant May 31, 2000

First Lieutenant May 31, 2002

Captain May 31, 2004

Major March 1, 2010

Lieutenant Colonel Aug. 1, 2015

Colonel June 1, 2021 (Current as June 2024)



# 374TH LEADERSHIP

## LT COL. HASMIN M. BOLLING



Lt. Col Hasmin M. Bolling is Commander at the 374th Force Support Squadron, Yokota Air Base Japan. She leads the largest squadron on Yokota AB with over 1,000 personnel, 61 facilities, and 600 annual programs that support a base population of more than 10,000. She is responsible for managing \$41M in annual non-appropriated fund (NAF) revenues and appropriated fund (APF) budgets.

Lt Col Bolling entered the Air Force in 2010 and earned her commission through the Reserve Officer Training Corps at San Jose State University. She served in various base and staff level positions to include Deputy of the Community Services Flight, Club Manager, Military Personnel Section Chief, Sustainment Services Flight Commander, Executive Officer, and Operations Officer.

Lt Col Bolling also deployed to Ali Al Salem Air Base, Kuwait for Operation INHERENT RESOLVE as the 387th Air Expeditionary Squadron's Director of Personnel and Fort McNair, Washington D.C. in support of Joint Task Force National Capital Region as a Protocol Officer for the 2017 Presidential Inauguration. Prior to her current position, she was the Commander at the 39th Force Support Squadron.

### EDUCATION

2010 Bachelor of Arts, Criminal Justice, San Jose State University, San Jose, Calif. 2010 Air and Space Basic Course, Maxwell Air Force Base, Ala.

2015 Squadron Officer School, Maxwell AFB, Ala.

2021 Master of Science, Criminology and Criminal Justice, University of Nebraska, Omaha, Neb. 2023 Master of Science, Military Operational Art and Science, Air University, Maxwell AFB, Ala.



# 374TH LEADERSHIP

## CLT COL. HASMIN M. BOLLING

### ASSIGNMENTS OR CAREER CHRONOLOGY

1. November 2010 – April 2012, Student, Undergraduate Pilot Training, Laughlin AFB, Texas.
2. April 2012 – January 2013, Deputy, Community Services Flight, 55th Force Support Squadron, Offutt AFB, Neb.
3. January 2013 – September 2013, Deputy, Sustainment Services Flight, Offutt AFB, Neb.
4. September 2013 – June 2014, Chief, Food Operations, 20th Force Support Squadron, Shaw AFB, S.C.
5. June 2014 – August 2015, Deputy, Sustainment Services Flight, Shaw AFB, S.C. (January 2015 – August 2015, Director of Personnel/A1, 387th Air Expeditionary Squadron, Ali Al Salem Air Base, Southwest Asia).
6. August 2015 – April 2016, Chief, Military Personnel Section, Shaw AFB, S.C.
7. April 2016 – April 2017, Flight Commander, Sustainment Services, Shaw AFB, S.C.
8. April 2017 – March 2018, Chief, Enlisted Development and Force Structure, JB Langley- Eustis, Va.
9. March 2018 – June 2019, Executive Officer, Directorate of Manpower, Personnel, & Services, JB Langley-Eustis, Va.
10. June 2019 – July 2021, Operations Officer, 51st Force Support Squadron, Osan AB, Republic of Korea
11. July 2021 – July 2022, Director, Force Support Cohort Analytics Program, JB SA-Randolph, Texas
12. July 2022 – July 2023, Student, Air Command and Staff College, Maxwell AFB, Ala.
13. July 2023 – July 2024, Commander, 39th Force Support Squadron, Incirlik AB, Turkey.
14. July 2024 – present, Commander, 374th Force Support Squadron, Yokota AB, Japan.

### SUMMARY OF JOINT ASSIGNMENTS MAJOR AWARDS AND DECORATIONS

Meritorious Service Medal with two oak leaf clusters.

Air and Space Commendation Medal with two oak leaf clusters Joint Service Commendation Medal.

Air and Space Achievement Medal.

### EFFECTIVE DATES OF PROMOTION

Second Lieutenant May 29, 2010 First Lieutenant August 4, 2012 Captain August 4, 2014

Major June 1, 2020

Lieutenant Colonel October 1, 2024 (Current as of October 2024)



# WIFI QR CODE

WIFI



WIFI NAME : Kanto-Secure  
PASSWORD : S@kurA2023