

HORIZONS

YOKOTA AB, JAPAN
Produced by the
374th Force Support Squadron

ISSUE 7
JULY 2025



SUMMER FRESCO
Quarterly Crafted Dinners
Pg. 7

WHAT'S COOKING?
A Virtual Culinary Class
Pg. 12

YOUTH SUMMER CAMPS
Get Your Kids Moving!
Pg. 20



JUL 2025

6 | OFFICERS' & ENLISTED CLUBS

11 | FARMERS MARKET

12 | WHAT'S COOKING?

14 | SPORTS & RECREATION

Golf

Tama Hills Golf & Resort

15 | TRAVEL

ITT

ODR Trips

18 | SKATE JAM

20 | YOUTH SUMMER CAMP

23 | M&FRC

27 | LIFE & LEISURE

Auto Hobby

Vehicle Operations

28 | GENERAL INFORMATION

Map

Directory



EMAIL NEWSLETTER



STAY UP TO DATE AND IN THE KNOW!
Scan here to sign up for our email newsletter:

DID YOU KNOW?
THE MARKETING OFFICE IS NOW OFFERING
PROFESSIONAL PHOTOS!



Simply scan the QR Code, title your ticket "(Your Name) Professional Photo Request" and we will reach out to you for scheduling.
Yes, it's that easy!

DEPARTMENTS

COMMAND

374 FSS COMMANDER, **LT COL HASMIN BOLLING**
OPERATIONS OFFICER, **MAJ HANNAH KABASO**
DEPUTY DIRECTOR, **MR. JASON BARREUTHER**
374 FSS SENIOR ENLISTED LEADER, **CMSGT JASMINE A. HOWELL**
FIRST SERGEANT, **MSGT MICHAEL COOPER (INTERIM)**

MARKETING OFFICE

DIRECTOR

CHIEF, MARKETING, **TIERRA KIMBLE**

EDITORIAL

WRITER-EDITOR, **MELANIE CRUZ**

ART

GRAPHIC ARTISTS, **TAKESHI TOYAMA**
AYA MORIYAMA
MASARU YOSHIHARA
ALYXIS TURPIN

BUSINESS

COMMERCIAL ADVERTISING MANAGER, **YOKO KOMIYA**
MARKETING STRATEGIST, **VACANT**
WEB SPECIALIST, **YUMIKO ROYSTER**
OFFICE MANAGER, **SHANNON HAWKINS**
SOCIAL MEDIA MANAGER, **VACANT**

PRINT

REPRODUCTION MANAGER, **MAKOTO ARITA**
OFFSET PRESS OPERATOR, **MASANORI OHNO**

VISUAL

PHOTOGRAPHER, **JEFFREY JOHNSTON**
VIDEOGRAPHER, **KWEKU AKYEAMPONG**

CONTACT MARKETING

WEB: **YOKOTA374FSS.COM**
FACEBOOK: **FACEBOOK.COM/YOKOTAFSS**
INSTAGRAM: **INSTAGRAM.COM/YOKOTAFSS**
YOUTUBE: **WWW.YOUTUBE.COM/@YOKOTA374FSS**
DSN: **225-3308**
COMMERCIAL: **042-552-2510 EXT. 5-3308 (ENGLISH)**
U.S. INTERNATIONAL: **011-81-3117-55-3308**
FAX: **225-2019**
MAIL: **374 FSS/FSK • UNIT 5119, BLDG 1295 • APO, AP 96328-5119**

Submissions are welcome. All submissions are subject to editing before printing. All articles, artwork, and photographs become the property of the 374th Force Support Squadron Marketing & Publicity Department.

HORIZONS is published for United States Military and Department of Defense personnel and their family members living in or assigned to the Kanto Plain (Japan) region and Japanese Nationals and their families assigned to Yokota Air Base, Japan. Horizons is the official magazine of the 374th Force Support Squadron, Yokota Air Base, Japan. Opinions expressed in Horizons do not necessarily represent those of the 374th Airlift Wing or the United States Air Force. No Federal endorsement of advertisers or sponsors is intended. All facility programs, event hours, and dates are subject to change.

EDITOR'S NOTE

There's a certain rhythm to midsummer, the kind that drifts in on the scent of sunscreen and barbecue smoke, carried by the sounds of laughter echoing off the water and the hum of cicadas in the background. July is when summer feels full and alive, and there's no better way to soak it all in than at the Midsummer Block Party on page 19. Expect games, music, and plenty of time to float, splash, and unwind with friends and neighbors under the open sky.

If the sweet-yet-tangy smell of barbeque calls your name and food is your love language, turn to page 12 for "What's Cooking," a virtual culinary class led by none other than Luca Mané, winner of MasterChef Season Four. He'll be guiding us through a fresh, seasonal recipe you'll want to recreate again and again. Feeling more daring or looking for a rush of adrenaline? Page 18 has all the details on July's Skate Jam, a high-energy skateboarding competition judged by a special guest professional skateboarder, where talent and tricks take the spotlight in front of an energized crowd. However you spend your time this month, from swimming and skating to stirring up something new in the kitchen, I hope you find moments that make your summer a little more unforgettable.

Melanie Cruz
Writer-Editor



Advertise With Us

横田基地内で広告・PRをしませんか?

SPONSORSHIP

Expose your business to over 12,000 customers at Yokota Air Base.

ADVERTISING

Place your ad in our monthly magazine.

 Yokota374FSS.com  042-552-2510
Ext. 53308



YOKOTA.CHURCH

Welcome Home!

- We are an OFF-BASE Church serving the Military Community
- Only ½ Mile South of Supply Gate on Route 16
- Parking On-Site
- **SUNDAY MORNING at 10:45**



Paid ad. No Federal endorsement of advertiser intended www.YOKOTA.CHURCH

- Raising two kids
- Buying a home
- Finish my degree
- Start my own company

Succeed Again.



ASIA.UMGC.EDU

90+ programs & specializations designed to help you achieve whatever you dream of next • Online & hybrid courses • Financial assistance & scholarships for those who qualify • No-cost digital materials replacing most textbooks • Lifetime career services



Attend a webinar to see how UMGC can help you succeed again!
Register at asia.umgc.edu/webinars.



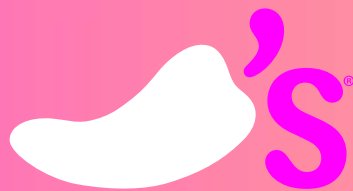
**UNIVERSITY OF MARYLAND
GLOBAL CAMPUS | ASIA**

Paid ad. No Federal endorsement of advertiser intended.

Stay-Cay

'RITA

Savor the tropics with our irresistible NEW
margarita with notes of Coconut, juicy
Pineapple, and Pomegranate
Your ultimate escape in a glass!



ONLY
\$6

LEGAL DRINKING AGE IN JAPAN IS 20 YEARS OLD. PLEASE ENJOY RESPONSIBLY!

OFFICERS' & ENLISTED CLUBS

ALL WELCOME

MEMBERS ONLY

OFFICERS' & ENLISTED CLUBS

OFFICERS' CLUB

225-8526 • Bldg. 31

DINING

KIDS \$2 MEAL NIGHT

Tue • 8, 15, 22, & 29 Jul • 5–7 p.m.
Chico's Chop House

SEAFOOD NIGHT

Wed • 9 Jul • 5–9 p.m. • Chico's Chop House
Reservations recommended
Select from a menu of your seafood favorites, clam chowder, snow crab, and more!

**Show proof of membership and receive 15% off!*

BUTCHER'S CHOICE

Wed • 16 Jul • 5–9 p.m. • Chico's Chop House
Prices range from: \$7–\$26
Reservations recommended

Featuring a choice of lobster, seafood, pork chops & steaks. Includes a salad bar and a buffet of delicious sides and assorted desserts that are free for members and \$5 for nonmembers, with a \$10 minimum purchase.

**Show proof of membership to receive 15% off!*

QUARTERLY FAMILY BINGO JUNGLE ADVENTURE

Wed • 30 Jul • 5–9 p.m.
Officers' Club Ballroom
\$20 • Ages 13 & Up; \$15 • Ages 3–12
Buffet will be provided and play four rounds with a winning team each game!

**Show proof of membership and receive \$5 off!*

ADULTS ONLY WEEKLY EVENTS

Thursdays: Trivia • 6–8:30 p.m.
Saturdays: Karaoke Night • 5–10 p.m.

ENLISTED CLUB

227-8820 • Bldg. 2066

DINING

SUNDAY BREAKFAST

Sundays • 9 a.m.–1 p.m.
Charlie T's
\$15.75 • Ages 13 & Up
\$7.50 • Ages 5–12
Free • Ages 4 & Under

ADULTS ONLY WEEKLY EVENTS

Wednesdays: Wingman Wednesday & Trivia • 6–9 p.m.
Thursdays: Texas Hold 'Em • 6–10 p.m.
Fridays: Karaoke • 6–10 p.m.
Saturdays: Tabletop Game Day • 9 a.m.–8 p.m.



ALL RANKS

All events listed below may only be attended by enlisted and officer club members.

KIDS EAT FREE

Tue • 1 Jul • 5–7 p.m. • Chico's

**With the purchase of a meal, dine-in only*

STATE ADMISSION DAY

Wed • 2 Jul • 5–9 p.m. • Chico's
New York, Idaho and Wyoming
Show your driver's license along with your AF Club Card to our cashier and your Wednesday dinner special is free!

**Up to \$10 value only*

RETIREES CLUB MEMBERSHIP APPRECIATION DAY

Fri • 25 Jul • 11 a.m.–1:30 p.m.
Charlie T's & Chico's Chop House
Retirees receive a 50% discount on their meal.

**Must show Retiree ID and AF Club Card*

ENLISTED CLUB

All events listed below may only be attended by enlisted personnel and their families.

FREE PIZZA NIGHT

Thu • 3 Jul • 5–7 p.m. • Shogun Lounge
Adults Only

FRIDAY SOCIAL HOUR

Fridays • 5–7 p.m. • Shogun Lounge
Adults Only

OFFICERS' CLUB

All events listed below may only be attended by officer personnel and their families.

FRIDAY SOCIAL HOUR

Fridays • 5–7 p.m. • Samurai Lounge

LAST FRIDAY SOCIAL HOUR

Fri • 27 Jul • 5–7 p.m. • Samurai Lounge
Free • Adults Only



/YokotaClubs

CHEF LEO'S Summer Fresco

QUARTERLY CRAFTED DINNERS

Sat • 19 Jul • 6–8 p.m.
Reservations Required by 15 Jul

Chico's Chop House
Members: \$55, Nonmembers: \$60

**40 seats, reservations only!*

Let the O'Club Culinary team take you on a journey of summer and taste the authentic, 5-course gourmet dinner for an evening to remember!

**Wine pairings are optional. For reservations and inquiries, call 225-8526*



POPULAR O'CLUB LUNCH ACTION STATIONS

Enjoy unlimited servings or build-your-own!



TUESDAY
BULGOGI



WEDNESDAY
FILIPINO
FIESTA



THURSDAY
MONGOLIAN
BBQ



FRIDAY
PASTA

\$12.50, show your membership card to receive a 15% discount!





PET CARE CENTER

Professional **DOG** **GROOMING** Services



TREAT YOUR PUP TO A FRESH NEW LOOK!

From full grooming to bathing, your dog will receive gentle, high-quality care designed to keep them looking and feeling their best.

Each appointment includes:

- Haircut and Bathing Service
- Anal Gland Expression
- Blow Dry
- Ear Cleaning
- Nail Trimming

Appointments open every third Tuesday for the following month. Availability is limited, so don't wait to book your pet's pampering session!

Grooming sizes are determined by the groomer. Drop-off times vary and are not first come, first served. Pets may remain in care for several hours, so please plan accordingly!

****All dogs must have a valid, current Rabies vaccination. For more details, call 225-8906.***

BEST FRIEND RUN

Sat - 30 Aug

7:30-9:30 a.m.

Par 3 - Free - All Ages

Bring your four-legged best friend for a fun-filled run! Enjoy a scenic route alongside fellow dog lovers as you and your pup get active together in a lively, pet-friendly atmosphere.



YOKOTA AB



AERO CLUB

**Learn to Fly and
Make Your Dreams a Reality!
Call 225-8988**





Farmers Market

FRI • 4 JUL • 3 P.M.–9 P.M.
Samurai Field - Celebrate America

SAT • 13 SEP • 9 A.M.–2 P.M.
Bldg. 316 Parking Lot

SAT • 11 OCT • 9 A.M.– 2 P.M.
Samurai Field - Matsuri Festival

SAT • 8 NOV • 9 A.M.– 2 P.M.
Bldg. 316 Parking Lot

Support our local vendors!

For additional information, please contact the Yokota Air Base Community Centers' Front Desk at 225-6955.



WHAT'S COOKING? PRESENTS

2025 VIRTUAL

Cooking Class

BY LUCA MANFE

WINNER OF MASTER CHEF SEASON FOUR



Be a part of this fun and innovative program, educating the Air & Space Force Communities on Master Chef dishes, kitchen skills and plating! Learn new culinary skills and connect with other military communities across these 12 virtual master classes.

**Classes will take place via Zoom.*



Scan the QR Code to find the guide and sign-up information!



YOKOTA CAN DANCE!!

Check out some of
the Community Center's Classes!



HAWAIIAN HULA

Whether you're passionate about Hawaiian Culture or just wanting to learn something new, this course is a great way to add traditional dance to your exercise routine. Ms. Sudo will guide you through hula basics, dance posture, and more. Come join us for lots of fun and dancing!

K-POP

Our dance lessons are open to all ages and skill levels, from beginners to skilled dancers. Ms. Sato is an experienced instructor who fosters a positive, supportive environment. Build your confidence, sharpen your skills, and shine with the Yokota Dance Angels!



KAYOKO'S SCHOOL OF BALLET

We offer ballet lessons for all ages, with levels and styles to support every dancer's growth. Ms. Hara, a dedicated instructor, teaches our certified curriculum with passion and care. From learning the basics to refining technique, this is your moment to shine on stage and beyond!



TANABATA

Embrace tradition and learn the art of Japanese folk dance with Ms. Hiruma, our certified instructor. This class offers a rich cultural experience filled with movement and meaning. Discover the beauty of the Tanabata Dance and enjoy a magical journey through one of Japan's cherished traditions.



For details or enrollment, please contact the Taiyo front desk at 225-6955, or visit us at building 3260, on the West side of Yokota AB, across from the Wakamoto School Age facility.

OUR CUSTOMER SERVICE HOURS ARE:

MON-FRI • 10 a.m.-8 p.m.
SAT • 9 a.m.-7 p.m.
SUN/HOL • Closed



SPORTS & RECREATION



TAMA HILLS GOLF & RESORT

Reservations/Lodging • 227-5230
Recreation • 227-5248



Tama History Scavenger Hunt:

Free • All Ages

Challenge your family and friends as you explore Tama on this scavenger hunt using your mobile device. Check-in at Outdoor Rec or the Lodge Reception for the QR-code. Scan, download the app, and you're on your way to becoming a Tama history buff! Adult supervision recommended for smaller kids. Wear comfortable walking shoes and dress for the weather! You can also rent a golf cart or use your own vehicle.



Tama Horse Stables

Wed-Sun

\$40 Trail Ride

\$50 Riding Lessons

\$7 Pony Ride

Climb into the saddle at Tama Hills! Enjoy a relaxing trail ride or improve your riding skills with a lesson. Pony rides are also available for younger children. Please call Tama Outdoor Recreation for more details.



Cabin BBQ To-Go

9-Ounce Grilled Chicken Breast-\$16

BBQ Pork Half-Slab Ribs-\$25

Eating BBQ in the cabins has never been so easy! Allow Kiji Dining to do the cooking for you so you have more time to relax. Call in your order before 4 p.m. and we'll have it ready for you to pick up at Tama Lodge between 5-8 p.m. Meals include three sides.



Paintball Battle Zone

2 Hour Group Package:

\$300 (Max: 10 participants)

Includes: Field Usage, Equipment/Gear & 4,000 Paintballs.

*Reservations required, call Tama Hills Outdoor Rec. at 227-5248.



FSS TRAVEL
**YOSHIDA
 FIRE FESTIVAL
 2025**
 TUE • 26 AUG

TRAVEL

The Yoshida Fire Festival, or Yoshida no Himatsuri, is held annually on August 26 to honor the goddess of Mt. Fuji and pray for another year of volcanic stillness. Serving as the grand finale to Mt. Fuji’s climbing season, this centuries-old tradition has been celebrated for over 500 years and is recognized as one of Japan’s three most unique festivals. During the vibrant celebration, the streets of Fuji-Yoshida come alive with the glow of massive taimatsu (torches) and the rhythmic procession of two grand omikoshi (portable shrines). More than just a spectacle, the Fire Festival is a cherished symbol of local heritage. This year, it promises to be as unforgettable as ever.

COST BY AGE GROUP:
 \$30 (4 & Up)
 \$30 (3 & Under, if a seat is needed)

ITINERARY:
 Depart 12 p.m.
 Festival 2:30–9 p.m.
 Return 11:30 p.m.

Tour cost includes transportation. There will be a lot of walking on this tour. We do not recommend small children participating due to the late returning time and the festival can get very crowded.



LEGEND |

- Eating Facilities Available
- Wear Comfortable Shoes & Clothes
- Bring Your Camera
- Bring ¥ for Shopping & Snacks
- Lots of Walking
- Great for Couples!

For updates on all things ITT,
 visit /YokotaTravel or
 scan the QR code.



For detailed information on ITT’s upcoming tours,
 visit Yokota374FSS.com/ITT. 227-7083 • Bldg. 327

OUTDOOR RECREATION

225-4552 • Bldg. 564

 /YokotaFSSTravel

 /Yokotafss_travel

JULY

MAHI-MAHI FISHING

Wed • 23 Jul • Sign up by: 12 Jul
3 a.m.–4 p.m. • \$250 • Ages 16 & Up
Includes: Transit, Boat Charter,
Equipment & Guide

**All participants must be able to cast lures and swim.*

NEW! OCHUDO TREKKING

AT MT. FUJI

Sat • 5 Jul • 7 a.m.–4 p.m.
\$40 • Ages 12 & Up
Sign up by: 2 Jul
Includes: Transit & Guide

STAND-UP PADDLEBOARDING & KAYAKING AT LAKE MOTOSU

Sat • 12 Jul • 5:30 a.m.–3 p.m.
\$60 • Ages 13 & Up
Sign up by: 9 Jul
Includes: Transit & Guide

WINDSURFING AT LAKE SAIKO

Wed • 16 Jul • 7 a.m.–3 p.m.
\$60 • Ages 15 & Up
Sign up by: 12 Jul
Includes: Transit, Windsurfing Gear & Lesson

FLOWER VIEWING/TREKKING

AT MT. NYUKASA

Sat • 19 Jul • 6 a.m.–5 p.m.
\$50 • Ages 13 & Up
Sign up by: 16 Jul
Includes: Transit, Gondola Round Ticket
& Guide

OVERNIGHT TRIPS

MT. FUJI OVERNIGHT MOUNTAINEERING

Fri–Sat • 25–26 Jul
Depart: 7:30 a.m.; Return: 5 p.m.
\$250 • Ages 18 & Up
Sign up by: 11 Jul

Thu–Fri • 31 Jul–1 Aug
Depart: 7:30 a.m.; Return: 5 p.m.
\$240 • Ages 18 & Up
Sign up by: 17 Jul

Includes: Transit, Mt. Fuji Entry Fee, Lodging,
Guide, Simple Dinner & Breakfast

**All participants must watch the Mt. Fuji safety briefing on the website, have properly fitting hiking boots/gear, or rent them in advance at ODR. For safety tips, suggested items and other important information regarding this trip, please refer to the Mt. Fuji pamphlet on the website or pick one up at ODR.*



Mt. Fuji Day Mountaineering

Sat • 12 Jul • Sign up by: 8 Jul
Sat • 19 Jul • Sign up by: 15 Jul
Sun • 27 Jul • Sign up by: 23 Jul

2:30 a.m.–9 p.m. • \$140 • Ages 16 & Up
Includes: Transit, Mt. Fuji Entry Fee
& Guide

**All participants must watch the Mt. Fuji safety briefing on the website, have properly fitting hiking boots/gear, or rent them in advance at ODR. For safety tips, suggested items and other important information regarding this trip, please refer to the Mt. Fuji pamphlet on the website or pick one up at ODR.*

Mahi-Mahi Fishing

Wed • 13 Aug • Sign-up: 15 Jul–2 Aug
Wed • 27 Aug • Sign-up: 29 Jul–16 Aug

3 a.m.–4 p.m. • \$250 • Ages 16 & Up
Includes: Transit, Boat Charter,
Equipment & Guide

**All participants must be able to cast lures
and swim.*

AUGUST

MT. FUJI DAY MOUNTAINEERING

Sat • 2 Aug • Sign-up: 3–29 Jul
Sun • 17 Aug • Sign-up: 18 Jul–13 Aug
Sat • 23 Aug • Sign-up: 24 Jul–19 Aug

2:30 a.m.–9 p.m. • \$140 • Ages 16 & Up
Includes: Transit, Mt. Fuji Entry Fee
& Guide

**All participants must watch the Mt. Fuji safety
briefing on the website, have properly fitting hiking
boots/gear, or rent them in advance at ODR. For safety
tips, suggested items and other important information
regarding this trip, please refer to the Mt. Fuji pamphlet
on the website or pick one up at ODR.*

WINDSURFING AT LAKE SAIKO

Tue • 19 Aug • 7 a.m.–3 p.m.
\$60 • Ages 15 & Up
Sign-up: 22 Jul–16 Aug
Includes: Transit, Windsurfing Gear & Lesson

STAND-UP PADDLE BOARDING & KAYAKING AT LAKE MOTOSU

Sat • 30 Aug • 5:30 a.m.–3 p.m.
\$60 • Ages 13 & Up
Sign-Up: 31 Jul–27 Aug
Includes: Transit & Guide

OVERNIGHT TRIPS

MT. FUJI OVERNIGHT MOUNTAINEERING

Thu–Fri • 7–8 Aug
Depart: 7:30 a.m.; Return: 5 p.m.
\$240 • Ages 18 & Up
Sign up by: 24 Jul

Fri–Sat • 22–23 Aug
Depart: 7:30 a.m.; Return: 5 p.m.
\$250 • Ages 18 & Up
Sign up by: 8 Aug
Includes: Transit, Mt. Fuji Entry Fee, Lodging,
Guide, Simple Dinner & Breakfast

**All participants must watch the Mt. Fuji safety
briefing on the website, have properly fitting hiking
boots/gear, or rent them in advance at ODR. For safety
tips, suggested items and other important information
regarding this trip, please refer to the Mt. Fuji pamphlet
on the website or pick one up at ODR.*



WHAT TO KNOW BEFORE YOU GO HIKE MT. FUJI

You will need to carry a 10-kilogram backpack while climbing a high-altitude, low-oxygen alpine mountain with an elevation gain of approximately 1,450 meters. The Fujiyoshida Trail takes about 7 hours uphill and 4 hours downhill. The actual distance from the 5th Station to the summit is approximately 6 to 7 km.

Necessary Equipment

- Hiking Boots with Thick Socks (No Sneakers)
- Backpack (25–40 Liters)
- Rainwear (Breathable Waterproof, No Ponchos)
- Quick-Drying Clothes (No Jeans) & Extra Layers (Fleece, Down Jacket)
- Quick-Drying Underwear
- Headlamp with Extra Batteries
- Trash Bag (Pack Out All Trash)
- Money (Approx. ¥10,000 for Stamps, Food, Drinks, and Toilet Fees)
- Drinks (1–2 Liters) & High-Calorie Snacks
- Other Essentials (Cap/Hat, Sunglasses, Sunscreen, Hiking Poles, Gloves, Gaiters)

Example Training Plan (Starting Two Months Before Hike)

- Squats – 5 min. daily
- Mountain Hiking – once a week
- Swimming – 30 min. once a week
- Jogging – 30 min. once a week
- Stair Climbing (Up & Down) – 30 min. once a week
- Knee Lifts – 5 min. daily
- Calf Raises & Toe Raises – 5 min. daily
- Planks (Full & Half) + Push-Ups – 5 min. daily
- Sit-Ups – 5 min. daily

TERMS & CONDITIONS

TRIPS & TOURS

All trips and tours are for SOFA personnel, dependents and guests, Reservist, National Guard, MLC, IHA and JASDAF with a valid I.D. Card. Trip destinations, details and prices may change due to varying factors including weather, road closures, base exercises, etc. Children must remain with their parents at all times. For additional requirements and information, please ask ODR staff for the trip itinerary.

RENTAL EQUIPMENT

Equipment must be reserved in advance by SOFA personnel, dependents and guests, Reservist, National Guard, MLC, IHA and JASDAF with a valid I.D. Card. Personnel not assigned to Yokota Air Base must have official TDY or leave orders.

Full terms and conditions will be provided at the time of reservation.

Scan the QR code for
all things ODR.



SKATE JAM

DROPPING INTO SUMMER

Sat • 26 Jul • 4:30–9 p.m.
East Skate Park • All Ages

Featuring a performance by Taiyo Ogino, Professional Skateboarder & Main Judge. The competition fee of \$25 or ¥3,500 includes T-Shirt and Lunch. Free to watch.

*Food will be available for purchase.



**FEATURING WITH
TAIYO OGINO**

SCAN THE QR CODE
TO SIGN UP!



(OFF-BASE
PERSONNEL ONLY)



DAIJOBUDA
SKATE III CLUB



No Federal endorsement of sponsors intended.

MIDSUMMER

Block Party



SAT • 19 JUL • 12-5 P.M.

SAKANA POOL • FREE • ALL AGES

Jump into our biggest event of the season! Bring your own floats and enjoy the music, games, diving contests and races. Sit back, relax and feel the sun, while the kids jump in our water bounce houses!



YOUTH SPORTS SUMMER CAMP

Mon-Fri • 8:30-11:30 a.m. • Ages 9-12

Locations vary



GOLF/DISC GOLF CAMP

8:30-11:30 a.m. • Ages 9-18

Jun
23-27
\$75



FOOTBALL CAMP

8:30-10 a.m. • Ages 9-18

Jun
23-27
\$20



CHEER CAMP

8:30-9:30 a.m. • Ages 9-11
9:30-10:30 a.m. • Ages 12-14
10:30-11:30 a.m. • Ages 15-18

Jul
21-25
\$50



ARCHERY CAMP

8:30-10 a.m. • Ages 9-18

Jul
14-18
\$20



BASKETBALL CAMP

8:30-11:30 a.m. • Ages 9-11
12:30-3:30 p.m. • Ages 12-18

21 Jul-
1 Aug
\$75



VOLLEYBALL CAMP

8:30-11:30 a.m. • Ages 9-11
12:30-3:30 p.m. • Ages 12-18

Aug
4-8
\$75



REGISTER NOW!

Register on your CYPBMS parent portal or email 374fss.fsyy.youthsports@us.af.mil to make an account.



YOUTH SPORTS
**COACHES
NEEDED**

CALL 225-4199

By volunteering as a coach, you'll be making a huge impact on the Yokota community. Help shape the champions of tomorrow – one game, one kid at a time!



YOUTH SPORTS

REGISTRATION DATES: 4 Aug-5 Sep • SEASON: Oct-Dec

VOLLEYBALL:



\$75 • Ages 9-15

FLAG FOOTBALL:



\$25 • Ages 3-4

\$75 • Ages 5-15

REGISTER YOUR CHILD FOR THE UPCOMING FALL SEASON!

CALL 225-4199

TA Tuesdays at Two

Tuesdays • 2 p.m.
Bldg. 316, Second Floor – Education Center
— **Military Members Only** —



Join us for an informative briefing on your tuition assistance benefits!
Military members are required to attend annually to remain eligible.

HEART LINK SPOUSE ORIENTATION

TUE • 29 JUL • 8 A.M.-2 P.M. • M&FRC • FREE • SPOUSES ONLY

Are you a spouse that has questions about Yokota or the military?
Discover the base by bus with us!

Locations will include:

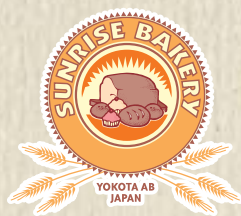
Medical Group, Dental Clinic,
Child Development Center and more!

*Tour will stop by the Japanese Dining Facility
for lunch (yen is required)*



Please register by calling M&FRC at **225-8725** or emailing **374fssfsfr@us.af.mil**





VISIT THE SUNRISE BAKERY

MON-FRI/FAM	6:30 A.M.-12 P.M.
SAT	7-11:30 A.M.
SUN/HOL	CLOSED
EXR	NORMAL





SIP 'N' PLAY Café

(Located inside Yujo Community Center)

OPEN NOW

Tue-Sat • 11 a.m.-7:30 p.m.
Sun-Mon • Closed



SIP 'N' PLAY
Café

Find Your Values and Reach Your Goals

Values orient people to what is personally meaningful and important to them. Values affect our attitudes, preferences, overt behaviors, help us to determine right from wrong, and assist us persevere during hardships.

According to recent research, value-based goals are not only more successful than those created to meet an extrinsic societal expectation, they're also healthier. We attach meaning and significance to pursuing value-based goals, which gives our lives a sense of purpose.

Value-based goals are more likely to give our lives purpose, and are successful because they're the part of our core internal system that guides our behavior, beliefs, and attitudes.

In other words, linking a goal to a value connects it with purpose, and makes it more likely to change the way your brain is wired. This will have subsequent sustainable and consistent effects on your behavior and able to you to reach that goal.

Want to learn more about finding your values and setting goals? Enroll in the next Resilience Training Assistant Course or find your squadron Resilience Team.

Inspired by Erica Harrison for Yoga Medicine



←
SCAN HERE TO APPLY

<https://forms.office.com/r/QzV8ncEEJd>



Scan the QR code to learn more about making these critical connections.



Paid ad. No Federal endorsement of advertiser intended.

We Aim to Serve You

We're here to help the military community and their families make the most of their money.

Our members could earn and save \$461* per year by banking with us.

Visit navyfederal.org to join.

Insured by NCUA.



*Dollar value shown represents the results of the 2024 Navy Federal Member Giveback Study. The Member Giveback Study takes into consideration internal market analyses comparing Navy Federal products with industry national averages, as well as member discounts, incentives, and other savings. Image used for representational purposes only; does not imply government endorsement.
© 2025 Navy Federal NFCU 14233-D (4-25)



ARMY
MARINE CORPS
NAVY
AIR FORCE
SPACE FORCE
COAST GUARD
VETERANS

Our Members Are the Mission

AUTO HOBBY SHOP



A/C SERVICE STATION THE ONLY ONE AT YOKOTA!

Make sure your car's air conditioning can beat the heat this summer with a check-up from Auto Hobby!

A/C system check

- \$30 for Single A/C
- \$45 for Dual A/C

Included:

- Evacuate Refrigerant
- Flush A/C System
- Refill Refrigerant
- Leak Detector Fluorescent Dye

*Material Cost (A/C Refrigerant, Leak Detector Dye) is not included.



VEHICLE OPERATIONS

FSS SHUTTLE SCHEDULE



Visit Yokota374FSS.com/vehicle-operations for complete shuttle schedule.

HANEDA SCHEDULE

MON-SUN

\$20 All Ages

TO HANEDA	Bus #1	Bus #2
DEPARTS LONG TERM PARKING LOT	11 a.m.	2:30 p.m.
DEPARTS KANTO LODGE	11:15 a.m.	2:45 p.m.
ESTIMATED ARRIVAL	1:45 p.m.	5:15 p.m.
TO YOKOTA	Bus #1	Bus #2
DEPARTS TERMINAL 1	4:30 p.m.	8 p.m.
DEPARTS TERMINAL 3	5 p.m.	8:30 p.m.
ARRIVES AT KANTO LODGE	7:30 p.m.	11 p.m.
ARRIVES AT LONG TERM PARKING LOT	7:40 p.m.	11:10 p.m.

NEW LOCATION

NARITA SCHEDULE

MON-SUN

\$40 Ages 13 & Up, \$30 Ages 12 & Under

TO NARITA	Bus #1	Bus #2
DEPARTS LONG TERM PARKING LOT	9:45 a.m.	11:45 a.m.
DEPARTS KANTO LODGE	10 a.m.	12 p.m.
ESTIMATED ARRIVAL	1:30 p.m.	3:30 p.m.
TO YOKOTA	Bus #1	Bus #2
DEPARTS TERMINAL 1	5 p.m.	7 p.m.
ARRIVES AT KANTO LODGE	8 p.m.	10 p.m.
ARRIVES AT LONG TERM PARKING LOT	8:15 p.m.	10:15 p.m.

NEW LOCATION

NEW SANNO SCHEDULE

SAT/SUN/HOL

\$10 All Ages

TO NEW SANNO	Bus #1	Bus #2
DEPARTS KANTO LODGE	9:30 a.m.	3 p.m.
ESTIMATED ARRIVAL	11:15 a.m.	5 p.m.
TO YOKOTA	Bus #1	Bus #2
DEPARTS NEW SANNO*	11:15 a.m.	5 p.m.
ESTIMATED ARRIVAL	12:45 p.m.	6:45 p.m.

* If bus arrives late to New Sanno, it will stop for 15 minutes before departing.

No reservations necessary. Payments accepted in yen or U.S. dollars. Personal checks and credit cards are not accepted. Pets, smoking and drinking alcoholic beverages are prohibited. Military, non-military, SDFK, and non-SDFK individuals can use this service. Non-SDFK individuals will need a certificate of sponsorship if riding unaccompanied.



374 FSS RESTAURANTS

Bangkok Express, Tomodachi Lanes	20
Charlie T's	46
Chico's	24
Chili's Grill & Bar	41
Mediterranean Bistro, Yujo Community Center	30
Rickenbacker's, Kanto Lodge	21
Rickenbacker's, Enlisted Club	46
Rise & Grind	73
Route 16	25
Samurai Café Dining Facility	28
Sip 'N' Play Café, Yujo Community Center	30
Sunrise Bakery	49

374 FSS FACILITIES

Aero Club/Flight Training	74
Arts & Crafts Center	29
Auto Hobby Shop	62
Building 316	34
Civilian Personnel	
Education & Training Section	
FSS Training Institute	
Military Personnel Section/Customer Support	
NAF HR	
Plans Readiness/Mortuary Affairs	
Enlisted Club	45
Family Child Care Office	1
ITT Pickup Point	13
Kanto Lodge	22
Kibo CDC	67
Library	44
Marketing/ Horizons Magazine	16
Military & Family Readiness Center	40
Narita/Haneda/New Sanno Shuttle Pickup/Drop-Off	22 & 75
Natorium	68
Officers' Club	23
Outdoor Recreation	42
Pet Care Center	64
Post Office	35
POV Resale Lot	26
Professional Development	80
Airman Leadership School	
Development Advisor	
First Term Enlisted Center	
Sakana Outdoor Pool	2
Samurai Fitness Center	43
MX Nutri Shop	
Samurai Training Grounds	84
Skate Park	72
Taiyo Community Center	4
Teen Center	69
Temporary Lodging Facility	75
Tomodachi Lanes Bowling Center	19
Vehicle Operations/Car Wash	11
Wakamono School-Age Care	6
Yokota Golf Center	65
Youth Center	66
Yujo Community Center	30
ITT (Information, Tickets & Travel)	
Night Flight Travel Agency	
Yume CDC	48
Tama Golf & Lodge	

OTHER PLACES OF INTEREST

AAFES Garage	10
AAFES Movie Theater	77
AAFES Warehouse	60
Airman's Attic	17
AMC Terminal	12
Burger King	36
Car Rental/Key Copying	14
Community Bank/Navy Federal Credit Union	33
Dental & Mental Health Clinics	78
Salons	18
East Chapel	70
Finance Office	27
Fire Stations	9
Friendship Chapel	32
Furniture Management Office	54
Hospital	76
Housing Office	50
Japanese Dining Hall	52
JK Mendel Elementary School	71
Laundromat	15
Maintenance Office	83
Pass & ID Office	81
Williams Technical Service Insurance	
Police Station (Security Forces)	39
Red Cross	40
U-Fix-It	51
Thrift Shop	3
USO	30
Veterinary Clinic	55
Visitors Center	37
WIC Office	58
YCC (AAFES Food Court/Barber Shop/BX/Dry Cleaning/	
Commissary/Military Clothing Sales/Salon)	38
Yokota High School	57
Yokota Middle School	56
Yokota West Elementary School	8



East Fitness Loop
3mi/5km

West Fitness Loop
1.4mi/2.2km

Lodging Fitness Loop
4mi/6.5km

OVERRUN ROADS OPERATION HOURS

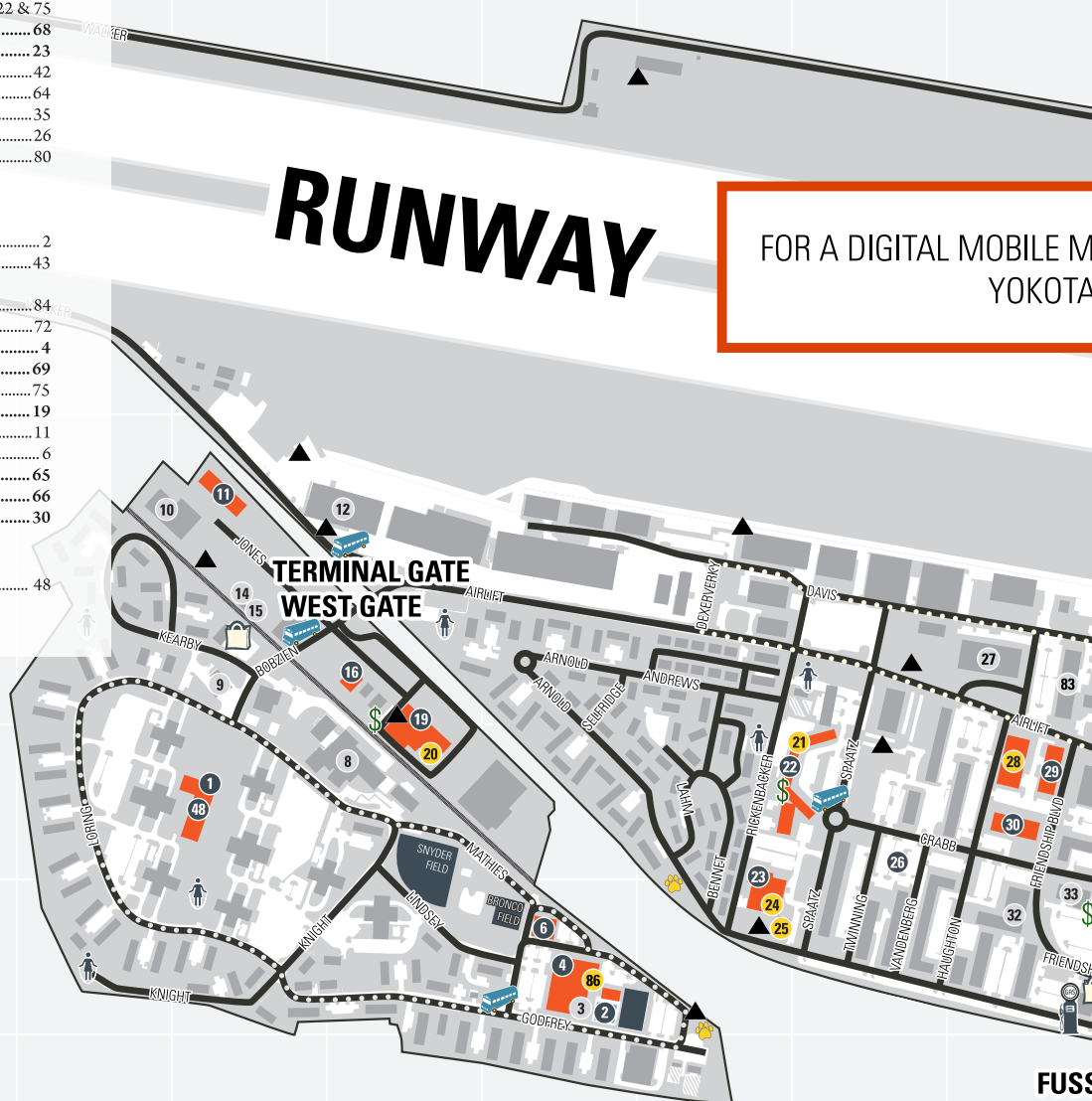
SOUTH

Open 24 Hours

NORTH





Closed

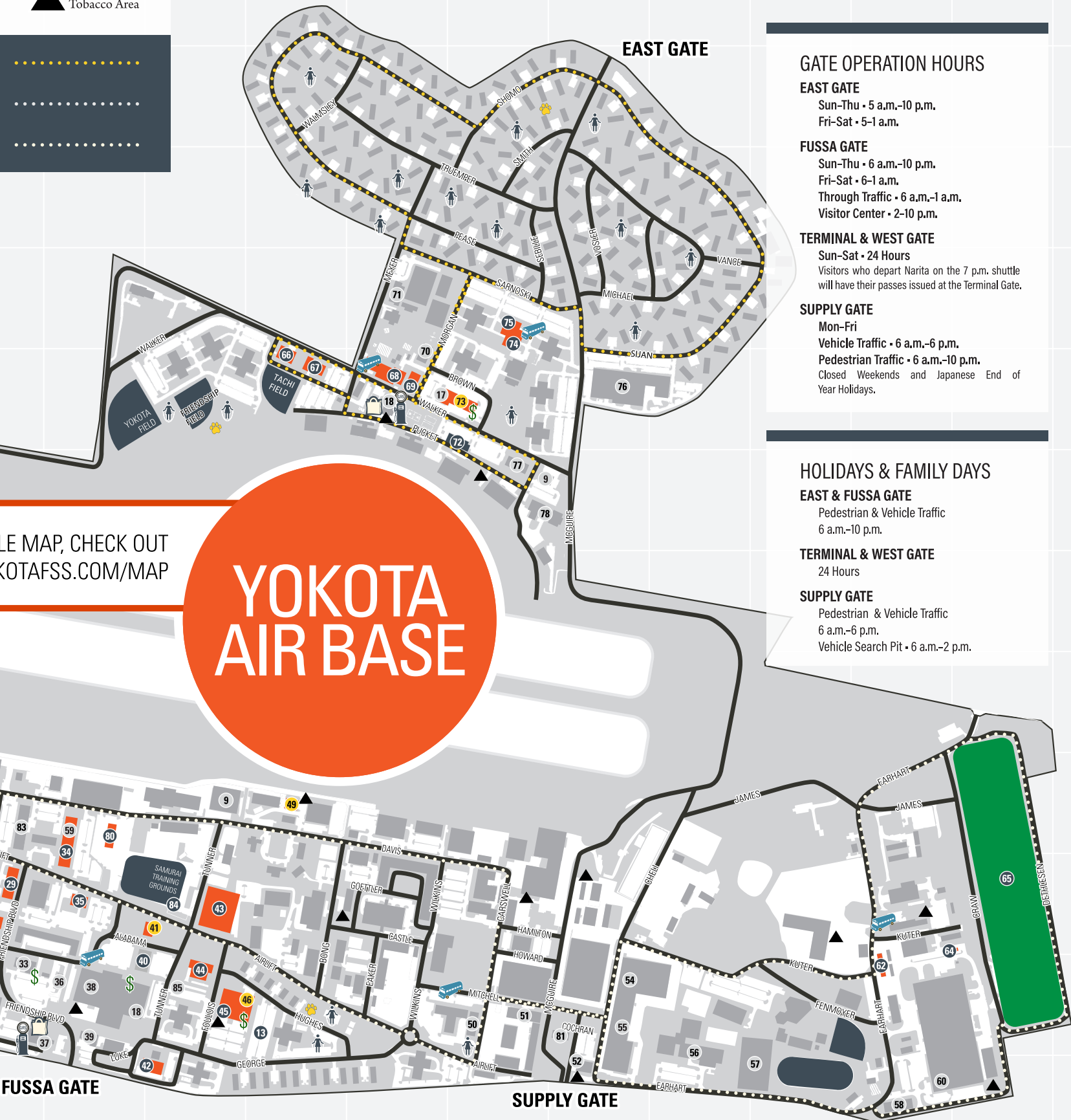
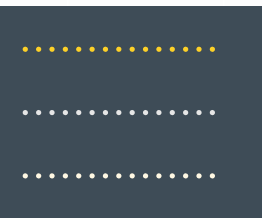
North overrun road closure includes bike/jogging path.



FOR A DIGITAL MOBILE M
YOKOTA

FORCE SUPPORT FACILITY GUIDE

-  Gas Station
-  ATM
-  Dog Park
-  Designated Tobacco Area



FOR MORE MAPS, CHECK OUT YOKOTAFSS.COM/MAP

YOKOTA AIR BASE

GATE OPERATION HOURS

EAST GATE

Sun-Thu • 5 a.m.-10 p.m.
Fri-Sat • 5-1 a.m.

FUSSA GATE

Sun-Thu • 6 a.m.-10 p.m.
Fri-Sat • 6-1 a.m.
Through Traffic • 6 a.m.-1 a.m.
Visitor Center • 2-10 p.m.

TERMINAL & WEST GATE

Sun-Sat • 24 Hours
Visitors who depart Narita on the 7 p.m. shuttle will have their passes issued at the Terminal Gate.

SUPPLY GATE

Mon-Fri
Vehicle Traffic • 6 a.m.-6 p.m.
Pedestrian Traffic • 6 a.m.-10 p.m.
Closed Weekends and Japanese End of Year Holidays.

HOLIDAYS & FAMILY DAYS

EAST & FUSSA GATE

Pedestrian & Vehicle Traffic
6 a.m.-10 p.m.

TERMINAL & WEST GATE

24 Hours

SUPPLY GATE

Pedestrian & Vehicle Traffic
6 a.m.-6 p.m.
Vehicle Search Pit • 6 a.m.-2 p.m.

DIRECTORY OF SERVICES

FAM PACAF Family Down Day / EXR Exercise / HOL Holiday

AERO CLUB/FLIGHT TRAINING

225-8988 • BLDG. 4304
(ASHIYA TLF TOWER)
Tue-Sat 9 a.m.-5 p.m.
Sun/Mon/Hol Closed
Fam/Exr Normal

ARTS & CRAFTS CENTER

225-7837 • BLDG. 334
Tue-Sat 9:30 a.m.-6 p.m.
Sun/Mon/Hol Closed
Fam/Exr Normal

AUTO HOBBY SHOP

225-7623 • BLDG. 4086
Sun-Sat* 10 a.m.-6 p.m.
Fam/Exr Normal
Hol Closed

YUME CHILD DEVELOPMENT CENTER

225-8810 • BLDG. 3015
Mon-Fri 6:30 a.m.-5:30 p.m.
Exr Normal
Sat/Sun/Hol/Fam Closed

CIVILIAN PERSONNEL

225-3901 • BLDG. 316 • RM. 217
EMPLOYEE RELATIONS • 225-3916
ALLOWANCES • 225-3906
Mon-Fri 7:30 a.m.-3 p.m.
Sat/Sun/Hol Closed
Fam/Exr Normal

EDUCATION & TRAINING CENTER

EDUCATION SERVICES • 225-4207
BLDG. 316
Mon-Tue 8 a.m.-3 p.m.
Wed 8 a.m.-12 p.m.
Thu-Fri 8 a.m.-3 p.m.
Sat/Sun/Hol/Fam Closed

ENLISTED CLUB

227-8820 • BLDG. 2066
BARBER SHOP • 227-8829
Mon-Sat (Incl. Exr) 9:30 a.m.-5:30 p.m.
Sun/Hol Closed
Fam Normal

BUSINESS OFFICE & CATERING

Mon-Fri 8 a.m.-5 p.m.
Sat/Sun/Hol Closed
Fam/Exr Normal

CASHIERS CAGE

Mon-Sun 10 a.m.-8 p.m.
Hol Closed
Fam/Exr Normal

SHOGUN LOUNGE

Sun-Thu 4-10 p.m.
Fri 4 p.m.-1 a.m.
Sat 5 p.m.-1 a.m.
Hol Closed
Fam/Exr Normal

FAMILY CHILD CARE OFFICE

225-8810 • BLDG. 3015
Mon-Fri 8 a.m.-5 p.m.
Sat/Sun/Hol/Fam Closed
Exr Normal

FLIGHT KITCHEN

225-9006 • BLDG. 335
Daily Open 24 Hours

FSS TRAINING INSTITUTE

225-8105/8106 • BLDG. 316
RM. 132, 133, 141 & 144
DSN FAX: 225-2060
Mon-Fri 7:30 a.m.-4:30 p.m.
Sat/Sun/Hol Closed
Fam/Exr Normal

INFORMATION, TICKETS & TRAVEL

227-7083 • BLDG. 327
LOCAL TOURS DESK: 227-7084
Mon-Fri 10 a.m.-6 p.m.
Sat 10 a.m.-3 p.m.
Sun/Hol Closed
Fam/Exr Normal
NIGHT FLIGHT TRAVEL AGENCY
225-6993/6999
Mon-Fri 10 a.m.-6 p.m.
Sat 10 a.m.-3 p.m.
Sun/Hol Closed
Fam/Exr Normal

KANTO LODGE

224-2002 • BLDG. 15
Daily Open 24 Hours

LIBRARY

225-7490 • BLDG. 617
Mon-Thu 10 a.m.-8 p.m.
Fri-Sun 10 a.m.-5 p.m.
Hol Closed
Fam/Exr Normal

MARKETING

225-3308 • BLDG. 1295
Mon-Fri 7:30 a.m.-4:30 p.m.
Sat/Sun/Hol/Fam Closed
Exr Normal

MILITARY & FAMILY READINESS CENTER

225-8726 • BLDG. 535
Mon-Thu 8 a.m.-4 p.m.
Fri 9 a.m.-4 p.m.
Every Last Fri Closed
Sat/Sun/Hol Closed
Fam Closed

MILITARY PERSONNEL FLIGHT CUSTOMER SUPPORT

225-9913 • BLDG. 316
Mon-Fri (Walk-Ins) 8 a.m.-10 a.m.
Mon-Fri (Appointments Only) 12-3 p.m.
Mon-Fri (Emergency Services) 8 a.m.-3 p.m.
Every Third Thu Closed
Sat/Sun/Hol/Fam/Exr Closed

NAF HR

225-3920 • BLDG. 316 • RM. 217
374FSS.HRO@US.AF.MIL
Mon-Fri 7:30 a.m.-3 p.m.
Sat/Sun/Hol Closed
Fam/Exr Normal

NATATORIUM

225-6133 • BLDG. 4338
FRONT DESK
Mon-Fri 9 a.m.-6 p.m.
Sat 10:30 a.m.-3 p.m.
Sun/Hol Closed
Fam/Exr Normal
POOL
Mon-Fri 5 a.m.-8 p.m.
Hol Closed
Fam/Exr Normal
SAKANA POOL
*Opens Memorial Day weekend
Thu-Mon 10 a.m.-6 p.m.
Tue/Wed Closed

OFFICERS' CLUB

225-8526 • BLDG. 31
BUSINESS OFFICE
Mon 8 a.m.-3 p.m.
Tue-Sat 8 a.m.-5 p.m.
Sun/Hol Closed
Exr Normal
CASHIERS CAGE • 225-8343/8526
Tue-Fri 10 a.m.-9 p.m.
Sat 5-9 p.m.
Sun/Mon/Hol Closed
Fam 5-9 p.m.
Exr Normal
CATERING OFFICE • 225-8342
Tue-Fri 10 a.m.-6 p.m.

SAMURAI LOUNGE

Tue-Sat 5-10 p.m.
Sun/Hol Closed
Fam/Exr Normal

OUTDOOR RECREATION/ EQUIPMENT RENTAL

225-4552 • BLDG. 564
Tue-Fri 9:30 a.m.-6 p.m.
Sun/Mon/Hol Closed
Sat 8 a.m.-5 p.m.
Fam/Exr Normal

PET CARE CENTER

225-8906 • BLDG. 4066
FRONT DESK
Mon-Fri 9:30 a.m.-5 p.m.
Sat 9:30 a.m.-3 p.m.
Sun 11 a.m.-5 p.m.
Hol Closed
Fam/Exr Normal

POST OFFICE

225-9383 • BLDG. 410
PARCEL PICKUP WINDOW
Mon-Sat 10 a.m.-5:30 p.m.
Sun Closed

CUSTOMER SERVICE

Mon-Fri 10 a.m.-5:30 p.m.
Sat-Sun Closed

OUTBOUND MAIL

Tue-Sat 10 a.m.-5 p.m.
Sun-Mon Closed

OFFICIAL MAIL CENTER

Mon-Fri 10 a.m.-3 p.m.
Sat-Sun Closed
Hol/Fam Closed

PROFESSIONAL DEVELOPMENT CENTER

ALS: 225-8331
DA: 225-7829
FTAC: 225-9525
BLDG. 580
Mon-Fri 7:30 a.m.-4:30 p.m.
Sat/Sun/Hol/Fam Closed
Exr Normal

SAMURAI FITNESS CENTER & ANNEX

225-8889/8890 • BLDG. 689/665
Mon-Fri 5 a.m.-9 p.m.
Sat/Sun/Fam 9 a.m.-5 p.m.
Hol Closed
MX NUTRI SHOP • 225-9893
Mon/Wed/Fri 6:30 a.m.-2 p.m.,
4-8 p.m.
Tue/Thu 9 a.m.-2 p.m.,
4-8 p.m.
Sat/Fam/Hol 9 a.m.-4 p.m.
Sun Closed

SCHOOL-AGE CARE

225-6397 • BLDG. 3258
KIBO - 225-4199 • BLDG 1592
Business Office 6:30 a.m.-5:30 p.m.
CARE
Mon/Wed/Thu/Fri 6:30-8 a.m.,
2-5:30 p.m.
Tue 6:30-8 a.m.,
1-5:30 p.m.
Sat/Sun/Hol/Fam Closed
WAKAMONO - 225-6397 • BLDG 3258
Business Office 6:30 a.m.-5:30 p.m.
CARE
Mon/Wed/Thu/Fri 6:30-7:50 a.m.,
2-5:30 p.m.
Tue 6:30-7:50 a.m.,
1-5:30 p.m.
Sat/Sun/Hol/Fam Closed

TAIYO COMMUNITY CENTER

225-6955 • BLDG. 3260
Mon-Fri 10 a.m.-8 p.m.
Sat 8 a.m.-4 p.m.
Sun/Hol Closed
Fam/Exr Normal

TAMA HILLS GOLF COURSE

042-374-2811
18-HOLE GOLF COURSE
Sat-Sun (Hol/Fam/Exr) Open
PRO SHOP
Sat-Sun 6:15 a.m.-4 p.m.
Hours subject to change due to weather conditions.

TAMA HILLS RECREATION AREA

227-5230

COUNTRY STORE

Mon	10 a.m.-2 p.m.
Tue	Closed
Wed-Thu	10 a.m.-1:30 p.m., 2:30-6 p.m.
Fri	10 a.m.-8 p.m.
Sat-Sun	8 a.m.-8 p.m.

HILLCREST LOUNGE

Mon/Tue	Closed
Wed-Sun	1-9 p.m.

RESERVATION DESK

Mon	12 a.m.-5 p.m.
Tue	Closed
Wed	8 a.m.-12 a.m.
Thu-Sun	24 Hours

TAMA ODR

227-5248

MARCH-OCTOBER

Sun	8 a.m.-6 p.m.
Mon	8 a.m.-2 p.m.
Tue	Closed
Wed-Thu	8 a.m.-5 p.m.
Fri-Sat	8 a.m.-7 p.m.

TEEN CENTER

225-6793 • BLDG. 4313

BUSINESS OFFICE

Mon-Thu	12-7 p.m.
Fri	12-9 p.m.
Sat/Sun/Hol/Fam	Closed
Exr	Normal

RECREATION CENTER

Mon-Thu	3-7 p.m.
Fri	3-9 p.m.
Sat/Sun/Hol/Fam	Closed

TOMODACHI LANES**BOWLING CENTER**

225-7191 • BLDG. 1213

Sun-Thu	11 a.m.-10 p.m.
Fri-Sat	11 a.m.-11 p.m.
Hol/Exr	11 a.m.-8 p.m.
Fam	Normal

UNITE

225-1433 • BLDG. 327

Mon-Fri	8:30 a.m.-4 p.m.
Sat/Sun/Hol/ Fam/ Exr	Closed

VEHICLE OPERATIONS

225-7720 • BLDG. 1290

BUSINESS OFFICE

Mon-Fri	6 a.m.-5 p.m.
Sat/Sun/Hol	Closed
Fam/Exr	Normal

CAR WASH/SELF-SERVICE

Daily (Apr-Oct)	6:30 a.m.-5 p.m.
Daily (Nov-Mar)	7 a.m.-5 p.m.

SHUTTLES

See Pg. 27

U-DRIVE PICKUP/DROP-OFF ONLY

Daily	6:30 a.m.-4:30 p.m.
-------	---------------------

WILLIAMS TECHNICAL SERVICE INSURANCE**PRIMARY OFFICE**

BLDG. 993, PASS & ID

225-2741

Mon-Fri	8 a.m.-3:30 p.m.
Sat/ Sun/Hol Fam	Closed
Friendship Festival	Closed

SATELLITE OFFICE

BLDG. 327, YUJO COMMUNITY CENTER

225-2742

FROM OFF BASE: 042-530-0799

03-6868-2363

Mon-Fri	9 a.m.-5 p.m.
Sat/Fam	10 a.m.-2 p.m.
Sun/Hol	Closed
Exr	Normal

YOKOTA GOLF CENTER

225-7441 • BLDG. 1591

CLUBHOUSE/PRO SHOP

Sat-Sun	7:30 a.m.-6 p.m.
---------	------------------

DRIVING RANGE

Mon/Wed-Sun	7 a.m.-8:30 p.m.
Tue	11 a.m.-8:30 p.m.

9-HOLE GOLF COURSE

Sat-Sun	7:30 a.m.-Sunset
---------	------------------

Hours subject to change due to weather conditions.

TSUBASA YOUTH CENTER

225-7441 • BLDG. 1591

BUSINESS OFFICE

Mon-Fri	12-6 p.m.
Sat/Sun/Hol/Fam	Closed
Exr	Normal

RECREATION CENTER

Mon/Wed-Fri	2-6 p.m.
Tue	1-6 p.m.
Sat/Sun/Hol/Fam	Closed

YOUTH SPORTS

225-4199 • BLDG. 1592

YUJO COMMUNITY CENTER

225-7713 • BLDG. 327

Mon-Sat	9 a.m.-5 p.m.
Sun/Hol	Closed
Fam	10 a.m.-6 p.m.
Exr	Normal

RESTAURANTS

BREAKFAST / LUNCH / DINNER

BANGKOK EXPRESS

227-5811 • BLDG. 1213

(TOMODACHI LANES)

Sun-Thu	11 a.m.-9:30 p.m.
Fri-Sat	11 a.m.-10:30 p.m.
Hol	11 a.m.-8 p.m.
Fam/Exr	Normal

CHARLIE T'S

227-8837/8820 • BLDG. 2066

BREAKFAST

Mon-Fri	6:30-10 a.m.
Sat	7 a.m.-1 p.m.
Sun	9 a.m.-1 p.m.

LUNCH

Mon-Fri	11 a.m.-1:30 p.m.
Sat	7 a.m.-1 p.m.
Sun	9 a.m.-1 p.m.

DINNER

Mon-Sat	5-9 p.m.
Sun/Hol	Closed
Fam/Exr	Normal

Charlie T's is open for a la carte menu on family days 7 a.m.-1 p.m. only.

CHICO'S CHOP HOUSE & SEAFOOD GRILL

225-9420/8343 • BLDG. 31

LUNCH (ACTION STATION)

Tue-Fri	11 a.m.-1:30 p.m.
Sat/Sun/Hol/Fam	Closed
Exr	Normal

DINNER

Tue-Sat	5-9 p.m.
Sun/Mon/Hol/Fam	Closed
Fam/Exr	Normal

CATERING OFFICE

Tue-Fri	10 a.m.-5 p.m.
---------	----------------

CHIL'S GRILL & BAR

1 (210)-547-9947 • BLDG. 536

Sun-Thu	11 a.m.-9 p.m.
Fri/Sat	11 a.m.-10 p.m.
Hol	4-9 p.m.
Fam/Exr	Normal

KIJI DINING ROOM

227-5230

(TAMA HILLS REC AREA)

Mon	8 a.m.-2 p.m.
Tue	Closed
Wed	11 a.m.-8 p.m.
Thu-Fri	8 a.m.-2 p.m., 4-8 p.m.
Sat-Sun	7 a.m.-2 p.m., 4-8 p.m.

MEDITERRANEAN BISTRO

225-8293 • BLDG. 327

BREAKFAST

Mon-Fri	6:30 a.m.-10:30 a.m.
---------	----------------------

LUNCH

Mon-Fri	10:30 a.m.-1:30 p.m.
Sat/Sun/Hol	Closed
Fam/Exr	Normal

RICKENBACKER'S COFFEE SHOP

KANTO LODGE • BLDG. 15

Daily	6 a.m.-3 p.m.
Hol/Fam	7 a.m.-1 p.m.
Exr	Normal

ENLISTED CLUB • BLDG. 2066

Mon-Fri	6:30 a.m.-2 p.m.
Sat/Sun/Hol	Closed
Fam/Exr	Normal

RISE & GRIND

225-9551 • BLDG. 4330

BREAKFAST

Mon-Fri	6:30-10:30 a.m.
Hol	Closed

LUNCH

Mon-Fri	10 a.m.-2 p.m.
Hol	Closed

ROUTE 16

225-8685 • BLDG. 35

BREAKFAST

Mon-Fri	7-10 a.m.
Sat-Sun	7-11 a.m.
Mon-Fri	Closed 10-11 a.m.
Fam	7-11 a.m.
Exr	Normal

LUNCH & DINNER

Mon-Sat	11 a.m.-8 p.m.
Sun	11 a.m.-7 p.m.
Hol	Closed
Fam	11 a.m.-8 p.m.
Exr	Normal

SAMURAI CAFÉ DINING FACILITY

225-8870 • BLDG. 335

MIDNIGHT

Daily	10 p.m.-12 a.m.
-------	-----------------

BREAKFAST

Mon-Fri	5:30-8 a.m.
Sat/Sun/Fam	6:30-9 a.m.

BRUNCH

Hol	7 a.m.-1 p.m.
-----	---------------

LUNCH

Daily	11 a.m.-1 p.m.
-------	----------------

DINNER

Daily	5-8 p.m.
-------	----------

SIP 'N' PLAY

225-6612 • BLDG. 327

Tue-Sat	11 a.m.-7:30 p.m.
Sun/Mon/Hol	Closed
Fam/Exr	Normal

SUNRISE BAKERY

225-8917 • BLDG. 621

Mon-Fri/Fam	6:30 a.m.-12 p.m.
Sat	7-11:30 a.m.
Sun/Hol	Closed
Exr	Normal

TAMA GOLF COURSE**TEE HOUSE RESTAURANT**

224-3426/7777 • BLDG. 1010

Mon	Closed
Tue-Sun	6 a.m.-4:30 p.m.
BREAKFAST	6 a.m.-10:30 a.m.
LUNCH	10:30 a.m.-4:30 p.m.

Hours subject to change due to weather conditions.

For information on closures and updates, scan here:



374 FSS Marketing & Publicity
374 FSS/FSK
Bldg. 1295 Unit 5119
APO, AP 96326-5119

MPS



SUMMER READING

FINALE POOL PARTY

SAT • 2 AUG

12:30-2:30 P.M.

NATATORIUM • ALL AGES



No Federal endorsement of sponsors intended.