

# HORIZONS

YOKOTA AB, JAPAN  
Produced by the  
374th Force Support Squadron

ISSUE 6  
JUN 2026



THIS YEAR'S INDEPENDENCE DAY FESTIVAL IS EVEN BIGGER AND BETTER THAN BEFORE! PG. 8



**BODYBUILDING COMPETITION**  
Save the date for the largest show of strength! Pg. 5

**STOP WAITING AT THE MPF**  
See how the Military Personnel Flight is saving your time! Pg. 20

**SUMMER READING**  
Grab your books and start logging your minutes! Pg. 22



# JUN 2026

- 5 | BODYBUILDING COMPETITION
- 6 | OFFICERS' & ENLISTED CLUBS
- 7 | SUMMER LUAU
- 8 | CELEBRATE AMERICA 250
  - ITT
  - ODR Trips
- 16 | TAMA HILLS GOLF & RESORT
- 19 | COMMUNITY CENTER CLASSES
- 20 | STOP WAITING AT THE MPF
- 22 | SUMMER READING PROGRAM
- 27 | LIFE & LEISURE
  - Auto Hobby
  - Vehicle Operations
- 28 | GENERAL INFORMATION
  - Map
  - Directory

All events in this magazine are subject to change.



**EMAIL NEWSLETTER**



**STAY UP TO DATE AND IN-THE-KNOW!**  
Scan to sign up for our email newsletter.

**YOKOTA AB. FORCE SUPPORT SQUADRON**  
横田基地内で広告・PRをしませんか?

**SPONSORSHIP**  
Expose your business to over 12,000 customers at Yokota Air Base.

**ADVERTISING**  
Place your ad in our monthly magazine.

 [Yokota374FSS.com](http://Yokota374FSS.com)  042-552-2510 Ext. 53308

# DEPARTMENTS

## COMMAND

374 FSS COMMANDER, **LT COL HASMIN BOLLING**  
DEPUTY DIRECTOR, **MR. JASON BARREUTHER**  
OPERATIONS OFFICER, **MAJ HANNAH KABASO**  
374 FSS SENIOR ENLISTED LEADER, **MSGT LEMUEL OLIVER**  
FIRST SERGEANT, **MSGT EDWARD BAILEY (INTERIM)**

## MARKETING OFFICE

### DIRECTOR

CHIEF, MARKETING, **MSGT TIMOFEY BORISOV (INTERIM)**

### EDITORIAL

WRITER-EDITOR, **MELANIE CRUZ**

### ART

GRAPHIC ARTISTS, **TAKESHI TOYAMA**  
**AYA MORIYAMA**  
**MAMI TAKABATAKE**  
**KYREE MORALES-MILLER**

### BUSINESS

COMMERCIAL ADVERTISING MANAGER, **YOKO KOMIYA**  
MARKETING STRATEGIST, **STACI HUTCHERSON**  
WEB SPECIALIST, **YUMIKO ROYSTER**  
OFFICE MANAGER, **SHANNON HAWKINS**  
SOCIAL MEDIA MANAGER, **VACANT**

### PRINT

REPRODUCTION MANAGER, **MAKOTO ARITA**  
OFFSET PRESS OPERATOR, **MASANORI OHNO**

### VISUAL

PHOTOGRAPHER, **JEFFREY JOHNSTON**  
VIDEOGRAPHER, **KWENU AKYEAMPONG**

SPECIAL THANKS TO **TAYLOR SLATER** FOR SUPPORTING THE MARKETING OFFICE!

### CONTACT MARKETING

WEB: **YOKOTA374FSS.COM**  
FACEBOOK: **FACEBOOK.COM/YOKOTAFSS**  
INSTAGRAM: **INSTAGRAM.COM/YOKOTAFSS**  
YOUTUBE: **WWW.YOUTUBE.COM/@YOKOTA374FSS**  
DSN: **225-3308**  
COMMERCIAL: **042-552-2510 EXT. 5-3308 (ENGLISH)**  
U.S. INTERNATIONAL: **011-81-3117-55-3308**  
FAX: **225-2019**  
MAIL: **374 FSS/FSK • UNIT 5119, BLDG 1295 • APO, AP 96328-5119**

Submissions are welcome. All submissions are subject to editing before printing. All articles, artwork, and photographs become the property of the 374th Force Support Squadron Marketing & Publicity Department.

**HORIZONS** is published for United States Military and Department of Defense personnel and their family members living in or assigned to the Kanto Plain region and Japanese Nationals and their families assigned to Yokota Air Base, Japan. Horizons is the official magazine of the 374th Force Support Squadron, Yokota Air Base, Japan. Opinions expressed in Horizons do not necessarily represent those of the 374th Airlift Wing or the United States Air Force. No Federal endorsement of advertisers or sponsors is intended.

## EDITOR'S NOTE

June is one of my favorite months! I love how one day you're reaching for a jacket, and before you know it, the sun is warmer and out longer. Everything just feels lighter. We are spotlighting the MPF this month, and how they are saving time in your day. The team introduced a new system that is making every visit faster, read the full story on page 20. If you save only one date this summer, make it July 4th, with Celebrate America 250. See pages 8 & 9 for details on the live entertainment, giveaways, and so much more. Just because I love the Chili's here, page 11 has this month's Margarita of the Month. Hot summer days and cold margaritas.. yes, please. I hope you enjoy this month as much as I do!

Melanie Cruz

**WABG**  
**RADIO**

Scan me to Listen!

We Love Blues

The best Blues, Classic Rock and "Poe" stuff.  
Poe is a 23-year USAF Vietnam-era veteran of AFRTS, Air Traffic Control and First Sergeant who owns and operates WABG Radio Broadcasting From Our Studios in Mississippi and Japan.

Download the APP WABG Radio (AM 960)  
<https://awesomeam.com>

Paid ad. No Federal endorsement of advertiser intended.

**YOKOTA.CHURCH**

*Welcome Home!*

- We are an OFF-BASE Church serving the Military Community
- Only ½ Mile South of Supply Gate on Route 16
- Parking On-Site
- **SUNDAY MORNING at 10:45**

Paid ad. No Federal endorsement of advertiser intended

[www.YOKOTA.CHURCH](http://www.YOKOTA.CHURCH)

**IMPORTANT  
ANNOUNCEMENT!**



# TA Tuesdays at Two has been updated!

The TA Brief at the Education Center is **included in Initial and Refresher Counseling** sessions. To request a virtual session, email the Education Center at [374FSS.FSDE@us.af.mil](mailto:374FSS.FSDE@us.af.mil)

EDUCATION CENTER

# Farmers Market

FREE ENTRY

**Sat • 13 Jun**

9 a.m.–2 p.m.

Bldg. 316 Parking Lot

**Sat • 4 Jul**

3–9 p.m.

Samurai Field – Celebrate  
America 250

**Sat • 26 Sep**

1–6 p.m.

Sakura Shell

**Sat • 10 Oct**

9 a.m.–2 p.m.

Bldg. 316 Parking Lot

**Sat • 14 Nov**

9 a.m.–2 p.m.

Bldg. 316 Parking Lot

Enjoy your shopping and support our local vendors!

Scan the QR Code for more  
details and vendor information.





# US-JAPAN FRIENDSHIP CUP BODYBUILDING COMPETITION

**Sun - 19 Jul**

**Doors Open: 2 p.m.; Finals: 3 p.m.**

**Taiyo Community Center - Ages 18 & Up**

**Free to attend**

**Scan the QR code for the athlete's entry fee**

Showcase and test your strength at our bodybuilding competition! Whoever you are, wherever you're from, sign-up to participate in the biggest fitness event of the year and celebrate the progress of your physique!

*Sign up by: 21 Jun (non-SOFA); 12 Jul (SOFA)*

*\*Call 225-8889 for details.*



**Guest Poser  
Christopher Knox**



*Scan to sign up!*



No Federal endorsement of sponsors intended.



# OFFICERS' & ENLISTED CLUBS

## ALL WELCOME

### OFFICERS' CLUB

225-8526 • Bldg. 31

#### DINING

#### SUMMER LUAU

Sat • 6 Jun • 5–7 p.m.  
Officers' Club • All Ages  
\$25 • Ages 13 & Up  
\$20 • Ages 3–12  
Free • Ages 2 & Under

Join us at the Officers' Club for all of your favorite Hawaiian delicacies! Island-inspired drinks will be available for purchase, with live Hula dancers and exciting games with great prizes; this will be an evening you don't want to miss! Hawaiian Buffet is included with tickets.

*\*Members get a \$5 discount.*

#### SEAFOOD NIGHT

Wed • 10 Jun • 5–9 p.m.  
Chico's Chop House

Reservation Recommended

Select from a menu of your seafood favorites and enjoy clam chowder, snow crab and more! Walk-ins are available on a first come, first served basis.

*\*Members get a 15% discount.*

#### \$2 KIDS MEAL NIGHT

Tue • 16 Jun • 4–6 p.m.  
Route 16

*\*With the purchase of an adult meal, dine-in only.*

#### BUTCHER'S CHOICE

Wed • 17 Jun • 5–9 p.m.  
Chico's Chop House

Reservation Recommended

Prices range from \$7-\$26. Featuring a choice of lobster, seafood, pork chops, and steaks. Includes a salad bar, a buffet of delicious sides and assorted desserts. The side and dessert buffet are free for members and \$5 for nonmembers with a \$10 minimum purchase. Walk-ins are available on a first come, first served basis.

*\*Members get a 15% discount.*

#### ADULTS ONLY WEEKLY EVENTS

Thursdays: Trivia • 6–8:30 p.m.  
Saturdays: Karaoke • 5–10 p.m.

#### ENLISTED CLUB

227-8820 • Bldg. 2066

#### DINING

#### SUNDAY BREAKFAST

Sundays • 9 a.m.–1 p.m.  
Charlie T's  
\$15.75 • Ages 13 & Up  
\$7.50 • Ages 5–12  
Free • Ages 4 & Under

Join us for all your breakfast favorites!

#### ADULTS ONLY WEEKLY EVENTS

Wednesdays: Wingman Wednesday & Trivia • 6–9 p.m.  
Thursdays: Texas Hold 'Em • 6–10 p.m.  
Fridays: Karaoke • 6–10 p.m.

## MEMBERS ONLY

### ALL RANKS

*All events listed below may only be attended by enlisted and officer club members.*

#### KIDS EAT FREE

Mon • 1 Jun • 5–8 p.m. • Charlie T's  
Tue • 2 Jun • 5–7 p.m. • Chico's Chop House

*\*With purchase, dine-in only.*

#### STATE ADMISSION DINNER

Wed • 3 Jun • 5–9 p.m.  
Charlie T's & Chico's Chop House  
New Hampshire, Virginia, Kentucky, Arkansas & West Virginia  
Show your driver's license along with your AF Club Card to our cashier and receive a free meal up to a \$10 value.

### ENLISTED CLUB

*All events listed below may only be attended by enlisted personnel and their families.*

#### FREE PIZZA

Thu • 4 Jun • 5–7 p.m.  
Shogun Lounge

#### MEMBERS WORLD TOUR EUROPE

Thu • 18 Jun • 5–7 p.m.  
Ohsawa Ballroom • Free

#### RETIREES APPRECIATION DAY

Fri • 26 Jun • Breakfast or Lunch  
Charlie T's & Chico's Chop House  
Show your Retiree ID along with a valid AF Club Card to our cashier and receive a 50% discount on your meal with the purchase of a dinner entree.

#### FRIDAY SOCIAL HOUR

Fridays • 5–7 p.m.  
Shogun Lounge • Adults Only

### OFFICERS' CLUB

*All events listed below may only be attended by officer personnel and their families.*

#### FRIDAY SOCIAL HOUR

Fridays • 5–7 p.m.  
Samurai Lounge • Adults Only  
Socialize with friends, enjoy our expansive hors d'oeuvres, and drink specials! Have a chance to win one of the weekly progressive drawings and the progressive jackpot!

#### LAST FRIDAY SOCIAL

Fri • 26 Jun • 5–7 p.m.  
Samurai Lounge • Adults Only  
Socialize with friends, enjoy our expansive hors d'oeuvres, and drink specials! Have a chance to win one of the weekly progressive drawings, the progressive jackpot, or a fabulous prize of your choice!





# LOOKING AHEAD: *Summer* *Luau*



**SAT • 6 JUN • 5-7 P.M.**  
**OFFICERS' CLUB • ALL AGES**

**\$25 • AGES 13 & UP**

**\$20 • AGES 3-12**

*\*MEMBERS GET A \$5 DISCOUNT*



Join us at the Officers' Club for all of your favorite Hawaiian delicacies!  
Island-inspired drinks will be available for purchase,  
with live Hula dancers and exciting games with great prizes;  
this will be an evening you don't want to miss!

*Hawaiian Buffet is included with tickets.*



1776 ★ YOKOTA AB JAPAN ★ 2026

# CELEBRATE AMERICA

250



**4 JUL • 3-9 P.M.**  
SAMURAI TRAINING GROUNDS




Join us in celebrating America's 250th birthday! This year looks even more spectacular than last, and for good reason. Enjoy a car show, giveaways, and so much more! Featuring performances from a fire breather, a Michael Jackson impersonator, the PACAF band, and local artists. Make sure to stop by the Samurai Field, you don't want to miss this festival!

PRESENTED BY THE 374TH FORCE SUPPORT SQUADRON



No Federal endorsement of sponsors intended.

## Kids' Fun

Balloon Artist, Bouncy Houses, Caricaturists, Face Painting, Slip-n-Slide, Craft Center, & more!



## Good Eats & Drinks

Food Booths, Chili's Bar & Grill, Panda Express & Craft Beer



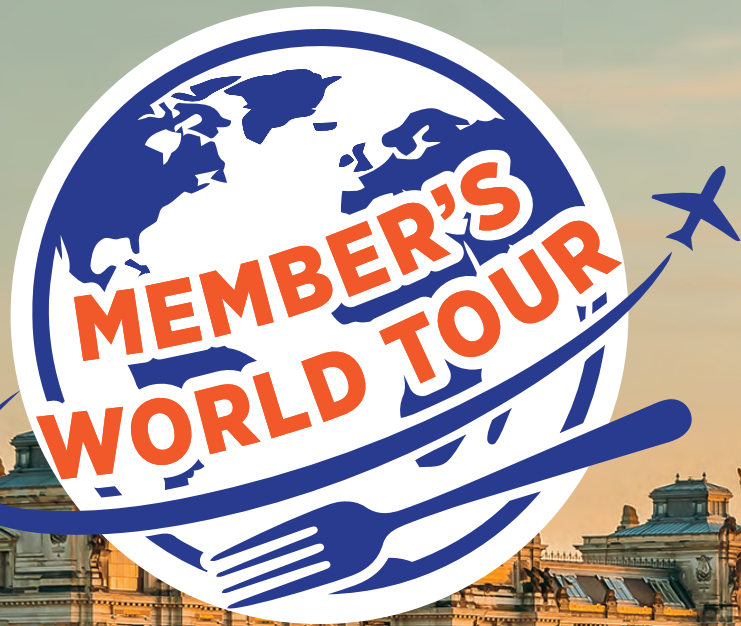
## Activities

Zip-line, Bungee Jump, Kids Go Carts, Bull Riding, Virtual Golf, Dunk Tanks, Surfing, Sports, & more!



Featuring the July  
Farmers Market





Embark on a vibrant culinary journey at our next members-exclusive dinner, where you can savor authentic, handcrafted dishes and immerse yourself in the passionate rhythms of live entertainment.

Don't forget to bring your Membership Passport to collect your unique stamp and get one step closer to special rewards!





**LEGAL DRINKING AGE IN JAPAN IS 20 YEARS OLD.  
PLEASE ENJOY RESPONSIBLY!**

✦  
**SERVING**  
**THE MILITARY**  
**COMMUNITY**

at home and abroad.

**FACTS**



Membership eligibility and product restrictions apply and are subject to change. USAA means United Services Automobile Association and its affiliates. The Department of the Navy does not endorse any company, sponsor or their products or services. MCCA Sponsor. No Federal or DoD endorsement implied. Paid ad. No federal endorsement of advertiser is intended. Neither the Coast Guard nor any other part of the federal government officially endorses any company, sponsor, or their products or services. © 2026 USAA. 7887249.0525

**800-531-87220**

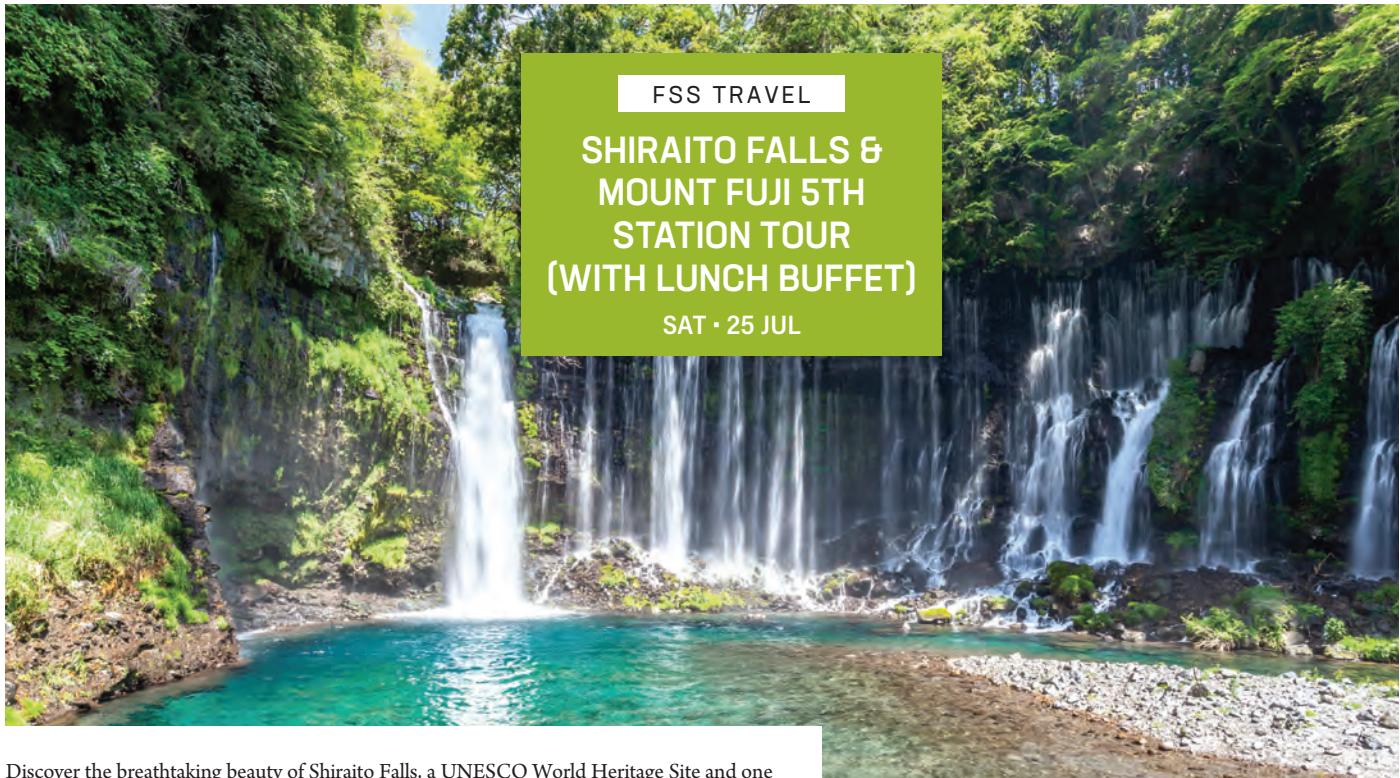
Paid ad. No Federal endorsement of advertiser intended.

# TRACKMAN TOURNAMENT

All Month • Yokota Golf Center  
Entry Fee: \$5 • Trackman Fee: \$15

Play a round of golf on the golf simulator at the Yokota Golf Center and compete in our monthly Trackman tournament. The golf course for June is Blackhawk Country Club in California. Call 225-8815 to make a reservation. One round of golf for a single player will take about one hour.





FSS TRAVEL  
**SHIRAITO FALLS &  
 MOUNT FUJI 5TH  
 STATION TOUR  
 (WITH LUNCH BUFFET)**  
 SAT • 25 JUL

TRAVEL

Discover the breathtaking beauty of Shiraito Falls, a UNESCO World Heritage Site and one of Japan’s most stunning waterfalls, nestled in the southwestern foothills of Mount Fuji. Fed by pristine snowmelt from the mountain, these majestic falls create a mesmerizing curtain of water cascading gracefully across a 150-meter (about 500-foot) wide cliff.

Ranked among Japan’s Top 100 Waterfalls, Shiraito is especially vibrant from early summer through late fall, when snowmelt flows abundantly through the rocky landscape. The delicate streams resemble white silk threads—giving the falls their name, “Shiraito,” meaning “white threads” in Japanese. A well-maintained walking path provides easy access from the parking area, with souvenir shops and local food vendors lining the scenic route to the base.

The journey also includes a visit to the Fugaku Wind Cave, a natural lava cave formed by past eruptions of Mount Fuji. Known for its refreshingly cool air year-round, it offers a fascinating glimpse into the region’s volcanic geology and a welcome escape from the heat.

At an elevation of approximately 2,300 meters (7,545 feet), the Fuji Subaru Line 5th Station is the most accessible and popular of Mount Fuji’s fifth stations. Located at the end of the Subaru Line toll road, it serves as a gateway to Japan’s most iconic peak and the primary starting point for many climbers. Visitors can enjoy sweeping panoramic views and a lively atmosphere filled with shops and eateries. Just behind the souvenir area, Komitake Shrine offers an observation point with unobstructed views of Fujiyoshida City and Lake Yamanaka, adding a serene cultural touch to the experience.

**COST BY AGE GROUP:**  
 \$65 (13 & Up)  
 \$55 (6-12)  
 \$40 (3-5)  
 \$30 (2 & Under, if a seat is needed)

**ITINERARY:**

Depart	7:30 a.m.
Shiraito Falls	10:15-11:15 a.m.
Wind Cave	11:45 a.m.-12:45 p.m.
Lunch Buffet	1:15-2:30 p.m.
5th Station	3:15-4:15 p.m.
Return	7:30 p.m.

*Tour cost includes bus transportation, cave admission, and a lunch buffet. You may want to bring a sweater or jacket, as the weather can be chilly at Mount Fuji’s 5th Station.*

*\*If the tour is unable to reach the 5th Station, it will visit Oshino Village instead.*

**LEGEND |**

—Eating Facilities Available	—Lots of Walking	—Great for Families!
—Bring ¥ for Shopping & Snacks	—Steps	—Great for Couples!
—Wear Comfortable Shoes & Clothes	—Bring Your Camera	

---

For updates on all things ITT, scan the QR code.

For detailed information on ITT’s upcoming tours, visit [Yokota374FSS.com/ITT](http://Yokota374FSS.com/ITT).  
 227-7083 • Bldg. 327



## OUTDOOR RECREATION

225-4552 • Bldg. 564

### JUNE

#### OCHUDO HIKING AT MT. FUJI 5TH STATION

Sat • 6 Jun • 7 a.m.

\$40 • Ages 12 & Up

Sign up by: 3 Jun

Includes: Transit & Guide

#### FOUR WHEELER RIDE & FOREST ADVENTURE AT CHICHIBU

Sat • 13 Jun • 7 a.m.–4 p.m.

\$85 • Ages 11–65

\$60 • Ages 6–10 (Tandem Four-Wheeler Ride)

Sign up by: 6 Jun

Includes: Transit, Four-Wheeler Ride & Forest  
Adventure Play Fee

#### KAYAK & STAND-UP PADDLE BOARD AT MOTOSU LAKE

Fri • 19 Jun • 7 a.m.

\$60 • Ages 13 & Up

Sign up by: 16 Jun

Includes: Transit & Guide

#### MAHI-MAHI FISHING

Fri • 19 Jun • 2:15 a.m.–4 p.m.

\$250 • Ages 16 & Up

Sign up by: 9 Jun

Includes: Transportation, Boat Charter,  
Equipment & Guide

We will head out to the depths of the ocean and go after Mahi-Mahi. We will be using lures or bait, depending on availability and moving from one spot to another looking for good spots to fish. Let your cares float away as you reel in your dinner.

*Requirements: All participants must be able to cast lures and swim.*

#### FLOWER VIEWING TREKKING AT MT. NYUKASA

Sat • 27 Jun • 6 a.m.–5 p.m.

\$50 • Ages 12 & Up

Sign up by: 24 Jun

Includes: Transportation, Gondola Round  
Ticket & Guide

### JULY

#### MAHI-MAHI FISHING

2:15 a.m.–4 p.m. • \$275 • Ages 16 & Up

Sat • 4 Jul • Sign-Up: 4–25 Jun

Wed • 15 Jul • Sign-Up: 15 Jun–7 Jul

Includes: Transportation, Boat Charter,  
Equipment & Guide

We will head out to the depths of the ocean and go after Mahi-Mahi. We will be using lures or bait, depending on availability and will move from one spot to another looking for good spots to fish. Let your cares float away as you reel in your dinner!

*Requirements: All participants must be able to cast lures and swim.*

#### KAYAK & STAND-UP PADDLE BOARD AT MOTOSU LAKE

Sat • 11 Jul • 5:30 a.m.

\$60 • Ages 13 & Up

Sign-Up: 11 Jun–8 Jul

Includes: Transit & Guide





### MT. FUJI DAY MOUNTAINEERING

2:15 a.m.–9 p.m. • \$140  
Ages 16 & Up

Sat • 11 Jul • Sign-Up: 11 Jun–7 Jul  
Sat • 18 Jul • Sign-Up: 18 Jun–14 Jul  
Sat • 25 Jul • Sign-Up: 25 Jun–21 Jul

Includes Mt. Fuji Admission Fee,  
Transportation & Hiking guide

### MT. FUJI OVERNIGHT MOUNTAINEERING

Depart: 7:30 a.m.; Return: 5 p.m.  
Ages 18 & Up

Fri–Sat • 24–25 Jul • \$260  
Sign-Up: 26 May–10 Jul  
Thu–Fri • 30–31 Jul • \$240  
Sign-Up: 2 Jun–16 Jul

Includes: Transit, Mt. Fuji Entry Fee,  
Lodging, Guide, Simple Dinner & Breakfast

Would you like to conquer Japan's highest mountain? If so, we challenge you to join us on this adventure. This is not an easy hike, but it will be one of your best!

Requirements: All participants must watch the Mt. Fuji safety briefing on the web site, have properly fitting hiking boots/gear, or rent them in advance at Outdoor Rec. For safety tips, suggested items and other important information regarding this trip, please refer to the Mt. Fuji pamphlet on the web site or pick one up at ODR.

Web Site: <https://yokotafss.com/odr/#mtfuji-hiking>

### WIND SURFING AT SAIKO LAKE

Wed • 15 Jul • 7 a.m.–3 p.m.

\$60 • Ages 15 & Up

Sign-Up: 16 Jun–11 Jul

Includes: Transportation, Windsurfing gear  
& Lesson

### FOREST ADVENTURE COURSE AT KOSUGE

Sat • 18 Jul • 7 a.m.–3 p.m.

\$45/Adventure Course • Height 140cm & Up

\$35/Kids Course • Height 110cm & Up

Sign-Up: 18 Jun–15 Jul

Includes: Transit & Play Fee

## TERMS & CONDITIONS

### TRIPS & TOURS

All trips and tours are for SOFA personnel, dependents and guests, Reservist, National Guard, MLC, IHA and JASDAF with a valid I.D. Card. Trip destinations, details and prices may change due to varying factors including weather, road closures, base exercises, etc. Children must remain with their parents at all times. For additional requirements and information, please ask ODR staff for the trip itinerary.

### RENTAL EQUIPMENT

Equipment must be reserved in advance by SOFA personnel, dependents and guests, Reservist, National Guard, MLC, IHA and JASDAF with a valid I.D. Card. Personnel not assigned to Yokota Air Base must have official TDY or leave orders.

Full terms and conditions will be provided at the time of reservation.

Scan the QR code  
for all things ODR.



# TAMA HILLS GOLF & RESORT

## TAMA HILLS GOLF & RESORT

Reservations/Lodging • 227-5230

Recreation • 227-5248

### FATHER'S DAY WEEK CELEBRATION

Wed-Sun • 17-21 Jun • 4-8 p.m.

Kiji Dining Room & Hillcrest Lounge

Featuring:

\$28.75 • Grilled Rib Eye Steak with Garlic  
Mushroom Sauce

\$20.75 • Garlic Shrimp in White Wine  
Butter Sauce

\$14.75 • Monterey Jack & Cheddar  
Diablo Chicken

Along with beverage specials and delicious sides!

### CABIN BBQ TO-GO

Eating BBQ in the cabins has never been so easy!  
Allow Kiji Dining to do the cooking for you so you  
have more time to relax.

Choose your entree:

\$16 • Grilled Chicken Breast

\$25 • BBQ Pork Half-Slab Ribs

Includes your choice of three sides: Baked Beans,  
Cheesy Broccoli, Mashed Potatoes, Coleslaw,  
Garlic Potato Wedge, or Mushroom Rice

Call in your order before 4 p.m. and we'll have  
it ready for you to pick up at Tama Lodge  
between 5-8 p.m.

Please call DSN 227-5230 or Commercial 042-  
377-7009 for more details.



### TAMA HORSE STABLES

Wed-Sun • \$40 Trail Ride

\$50 Riding Lessons, \$7 Pony Ride\*

Climb into the saddle at Tama Hills!

Enjoy a relaxing trail ride or take a  
lesson in the corral. We also have pony  
rides available for the little ones.

*\*Weather permitting, and there are some  
requirements.*

*Please call Tama Outdoor Recreation  
at DSN 227-5248 or Commercial 080-  
3465-0745 for more details.*





## TAMA HISTORY SCAVENGER HUNT

Challenge your family and friends as you explore Tama on this scavenger hunt using your mobile device. Free to participate.

Check-in at Outdoor Rec or Lodge Reception for the QR-code. Scan, download the app, and you're on your way to becoming a Tama history buff! Fun for all ages, adult supervision recommended for smaller kids. Wear comfortable walking shoes and dress for the weather! You can also rent a golf cart or use your own vehicle.

## LET TAMA HILLS CATER YOUR NEXT EVENT...

Conference services include room and audio-visual equipment starting at \$50, we also offer catering and other food and beverage services.

### Leaders!

Team-building opportunities abound at Tama Hills, from our new Paintball Battle Zone to electric-assist mountain bikes tours, we have the facilities and equipment to boost esprit de corps among your unit. Ask about our new Outdoor Adventure Package!

Call DSN 227-5230 or  
commercial 080-3465-0745  
for more details.



## TAMA HILLS APEX EVENT CENTER

\$100 1st Day/\$50 Additional Days

Located in the center of the Tama Hills Recreation Area, host your next conference for up to 50 people with tables and chairs, or it can be arranged to a cocktail style, standing room for weddings, retirements, or promotions. On a budget? No problem, your rental includes use of our industrial-sized kitchen and equipment for you to prepare your own meals.

- Raising two kids
- Buying a home
- Finish my degree
- Start my own company

Succeed Again.



**ASIA.UMGC.EDU**

90+ programs & specializations designed to help you achieve whatever you dream of next • Online & hybrid courses • Financial assistance & scholarships for those who qualify • No-cost digital materials replacing most textbooks • Lifetime career services



Attend a webinar to see how UMGC can help you succeed again!  
Register at [asia.umgc.edu/webinars](https://asia.umgc.edu/webinars).



**UNIVERSITY OF MARYLAND  
GLOBAL CAMPUS | ASIA**

Paid ad. No Federal endorsement of advertiser intended.



# COMMUNITY CENTER LESSONS

## TAIYO COMMUNITY CENTER



### YOKOTA DANCE COMPANY

This dance class offers a variety of lessons, including jazz, tap, hip-hop, contemporary, lyrical, and dance theater. The wide range of lessons provides dancers of all ages and skill levels an opportunity to advance their skills. The Yokota Dance Company includes opportunities to showcase your dance skills through dance recitals and base events throughout the year. We hope you'll come and learn from one of our talented instructors.

*Every Friday • Taiyo Community Center  
Hip Hop Instructor: Mr. Jason Angove*



### JAPANESE LANGUAGE

This is the perfect opportunity to learn Japanese as a beginner or intermediate speaker of the language. If you're looking to learn conversational Japanese or advanced language skills, Mr. Nishi is here to help.

*Every Tuesday • Taiyo Community Center  
Instructor: Taketo Ippei Nishi*



### TRADITIONAL KARATE

Our Karate classes are taught by Sensei Abe and feature training that focuses on discipline, emotional education, and the rewarding experience of this art. Karate is a lifelong skill that can be learned at any age. Your first step to basic physical fitness, endurance, and active training starts with signing up today!

*Every Tuesday and Saturday  
Taiyo Community Center  
Instructor: Yasushi Abe*

Contact the Taiyo Community Center at 225-6955 for details.  
All dates & classes are subject to change.

# Stop the Wait, with the Waitwhile

Your MPF is Changing the Way They Serve You

Going to the MPF used to be something you would block off your whole afternoon for. Most of us share the opinion that at any base, getting your ID renewed takes forever. Despite this, our very own 374th FSS Military Personnel Flight is **putting in the work to change the game**. With a fresh focus on innovation, their goal is to make every visit faster and smoother than ever before.

The 27-member team serves our base population of over 12,000, covering everything from ID cards to retirements. They touch nearly every stage of a service member's career. Their focus right now? Get you in, taken care of, and **back to your daily life**.

**Skip the waiting room** with their new mobile queue system, Waitwhile! Join the line from your phone, anytime, anywhere.

**Getting started** takes six easy steps.

1. Scan the QR code.
2. Tap the Register Now button.
3. Select your service.
4. Join the line or schedule a booking.
5. Enter your name, personal phone number, email, and rank.
6. Click Join the Line.

You now have the convenience to wait anywhere on base and will receive a notification once it's your turn. With 15 minutes to arrive, you are promised more time to spare and to be taken care of. As customer support section chief MSgt Andrea Ally puts it, "We want to give people a chance to take care of other needs." No more

sitting and waiting. Additionally, it's **best to come midweek**, as Mondays and Fridays are busiest. "This is to streamline getting our customers in and out, so we can all get back to the mission," she stated.

**Come prepared** for a faster visit. Customer support requires two forms of ID and applicable eligibility documents. Those PCSing need their full final-out checklist. For Order Amendments, supporting documents are required. Renew your ID as early as 90 days from the expiration date to beat the last minute rush. When possible, stop by your unit's CSS first, as your 3F0s can often resolve things at the unit level. To reach MPF directly, email the right org box and allow up to three duty days for a response.

By Melanie Cruz



## MILITARY PERSONNEL FLIGHT BLDG. 316, RM. 121 | MON-FRI

### ID CARDS:

Walk-Ins: 8-10 a.m. | Appointments Only: 12-3 p.m.  
Passport Pick-Up: Tue-Fri • 11 a.m.-12 p.m. & 2 p.m.-3 p.m.

### ALL OTHER MPF SERVICES: 8 a.m.-3 p.m.

For unlocks, lost or expired IDs, please visit the MPF during normal duty hours. For outside duty hours, please contact your Unit First Sergeant.



For the org boxes, and more information, scan the QR Code!



To join the waitlist or book an appointment, scan the QR Code!



**CAPT LATASHIA  
COOPER-CASSADINE**  
Flight Commander



**MSGT JACKIELINE  
NAVARRA**  
Flight Chief



**CUSTOMER SUPPORT**

ID Cards | DEERS Enrollments | Line of Duty (LOD)  
SGLI Online Enrollment Systems (SOES)  
Initial Enlistment Bonus (IEB) | Accessions | In-processing & Leave  
(units without a CSS) | Agent Letters | Special Leave Accrual (SLA)



**CAREER DEVELOPMENT**

Special Actions | Reenlistments | Extensions | DEROS Management  
Family Member Travel/Passports | Selective Retention Bonus (SRB)  
Outbound Assignments | Retirements | Separations | Promotions



**FORCE MANAGEMENT**

Permanent Change of Assignment (PCA) | Classification  
Special Duty Assignment Pay (SDAP) | Duty Status & Information  
G-Series Orders | Adverse Actions | Awards & Decorations | Evaluations  
Enlisted Forced Distribution Panel (EFDP) | Inbound Amendments



**INSTALLATION PERSONNEL READINESS**

Air Force Personnel Accountability and Assessment System (AFPAAS)  
Deployments | Contingency, Exercise, and Deployment (CED) Orders



**PERSONNEL SYSTEMS MANAGER**

Base Level Service Delivery Model (BLSDM) | Personnel Records  
Display Application (PRDA) | Case Management System (CMS)  
myEval & myDecs | Military Personnel Data System (MilPDS)



# SUMMER READING

## KICK-OFF

PLANT A SEED, READ

MON • 1 JUN  
4-6 P.M.  
YOKOTA LIBRARY  
ALL AGES

FREE FOOD  
•  
GAMES AND  
ACTIVITIES

•  
SUMMER READING  
SIGN-UP



DOD MWR LIBRARIES  
SUMMER READING PROGRAM  
on Military Installations Worldwide





In addition to classes, the Arts & Crafts Center offers several other outlets for all your artistic endeavors. Check them out!



## PICTURE FRAMING

With a large assortment of framing and matting supplies, knowledgeable professionals will guide you in the right direction to produce beautifully framed pieces.

From unique travel mementos to custom military keepsakes and retirement shadowboxes, visit the Arts & Crafts Center to transform your service milestones into lasting heirlooms.

## AWARDS & KEEPSAKES

Custom Pieces with Design Collaboration

Transform your vision for custom gifts and premium recognition into reality at the Arts & Crafts Center. We provide state-of-the-art UV printing on diverse materials, including acrylic, wood, and metal, along with specialized laser engraving and CNC metal etching for a 3D effect on name plates. From personal milestones to unit awards, our expert design assistance ensures a flawless finish. Stop by the Center today to start creating!



## CERAMICS

Discover the art of ceramics through hands-on classes for all ages. From children's and teen programs to adult wheel throwing, our courses are designed to build skills and spark creativity. We also offer special, themed bisque painting sessions throughout the year, with projects inspired by popular holidays, perfect for creating something both meaningful and memorable.

# LIFE & LEISURE

## MILITARY & FAMILY READINESS CENTER

225-8726 • Bldg. 535

## JAPANESE CULTURAL WORKSHOPS CUSTOMS & COURTESIES

Mon • 8 & 22 Jun • 1–2:30 p.m.

### *Japanese Cooking Class*

Tue • 23 Jun • 12–1 p.m.



## EFMP WORKSHOPS

### EFMP FAMILY BOWLING

Fri • 12 Jun • 4–6 p.m.

### EFMP 101

Tue • 16 Jun • 11 a.m.–12 p.m.

### EFMP + REDCROSS MINDFUL MOVEMENT

Thu • 18 Jun • 3:30–4:30 p.m.

Please contact the M&FRC  
to register 225-8725 or  
374fssfsfr@us.af.mil

## FINANCIAL TOUCHPOINTS CONTINUATION PAY FINANCIAL TOUCHPOINT

Tue • 2 Jun • 2–3 p.m.

### *First Child Financial Touchpoint*

Tue • 16 Jun • 1–3 p.m.





# We've got your bases covered

We're here to help the military community and their families make the most of their money. **Our members could earn and save \$461\* per year by banking with us.**

Visit [navyfederal.org](https://navyfederal.org) to join.

Navy Federal is insured by NCUA.



\*Dollar value shown represents the results of the 2024 Navy Federal Member Giveback Study. The Member Giveback Study takes into consideration internal market analyses comparing Navy Federal products with industry national averages, as well as member discounts, incentives, and other savings. Image used for representational purposes only; does not imply government endorsement. © 2026 Navy Federal NFCU 14233-E (2-26)



**Our Members Are the Mission**



**NEW SERVICE ANNOUNCEMENT!**

# MICROBUBBLE BATHING SYSTEM

Available for all bathing and grooming services, this system is designed to significantly improve your pup's skin conditions, improving their quality of life and the time between grooming appointments!

*\*Grooming appointments may be scheduled on the third Tuesday of each month for services in the following month.*

**SKIN CHANGES AFTER MICRO BUBBLE CARE**



1st use

3rd use

6th use

**CALL 225-8906/+1 (210) 547-9935  
OFF BASE 042-552-7353 FOR DETAILS AND BOOKING.**



## AUTO HOBBY SHOP

225-7623 • Bldg. 4086

### ONLY ONE FULL A/C SERVICE STATION AT YOKOTA!

A/C System Check for R-134a System

- \$30 for Single A/C
- \$45 for Dual A/C

Included:

- Evacuate Refrigerant
- Flush A/C System
- Refill Refrigerant
- Leak Detector Fluorescent Dye

*\*Material Cost (A/C Refrigerant, Leak Detector Dye) is not included.*

A/C System Troubleshoot and Repair: \$37/hourly labor.

Call 225-7623 for detail.



## VEHICLE OPERATIONS

225-7720 • Bldg. 1290

# FSS SHUTTLE SCHEDULE



Visit [Yokota374FSS.com/vehicle-operations](http://Yokota374FSS.com/vehicle-operations) for complete shuttle schedule.

### HANEDA SCHEDULE

MON-SUN

\$20 All Ages

TO HANEDA	Bus #1	Bus #2
DEPARTS LONG TERM PARKING LOT	11 a.m.	2:30 p.m.
DEPARTS KANTO LODGE	11:15 a.m.	2:45 p.m.
ESTIMATED ARRIVAL	1:45 p.m.	5:15 p.m.
<hr/>		
TO YOKOTA	Bus #1	Bus #2
DEPARTS TERMINAL 1	4:30 p.m.	8 p.m.
DEPARTS TERMINAL 3	5 p.m.	8:30 p.m.
ARRIVES AT KANTO LODGE	7:30 p.m.	11 p.m.
ARRIVES AT LONG TERM PARKING LOT	7:40 p.m.	11:10 p.m.

### NARITA SCHEDULE

MON-SUN

\$40 Ages 13 & Up, \$30 Ages 12 & Under

TO NARITA	Bus #1	Bus #2
DEPARTS LONG TERM PARKING LOT	9:45 a.m.	11:45 a.m.
DEPARTS KANTO LODGE	10 a.m.	12 p.m.
ESTIMATED ARRIVAL	1:30 p.m.	3:30 p.m.
<hr/>		
TO YOKOTA	Bus #1	Bus #2
DEPARTS TERMINAL 1	5 p.m.	7 p.m.
ARRIVES AT KANTO LODGE	8 p.m.	10 p.m.
ARRIVES AT LONG TERM PARKING LOT	8:15 p.m.	10:15 p.m.

### SHINJUKU SHUTTLE

(Tokyo Metropolitan Government Building)

SAT/SUN/HOL • \$10 All Ages

TO TMGB	Bus #1	Bus #2
DEPARTS KANTO LODGE	9:30 a.m.	3 p.m.
ESTIMATED ARRIVAL	11:10 a.m.	4:45 p.m.
<hr/>		
TO YOKOTA	Bus #1	Bus #2
DEPARTS TMGB	11:15 a.m.	5 p.m.
ESTIMATED ARRIVAL	1 p.m.	7 p.m.

\*Scan the QR Code for the map pin of the TMGB Bus Parking Lot.



No reservations necessary. Payments accepted in yen or U.S. dollars. Personal checks and credit cards are not accepted. Pets, smoking, and drinking alcoholic beverages are prohibited. Military, non-military, SOFA, and non-SOFA individuals can use this service. Non-SOFA individuals will need a certificate of sponsorship if riding unaccompanied.



## 374 FSS RESTAURANTS

- 📶 Bangkok Express, Tomodachi Lanes .....20
- 📶 Charlie T's .....46
- 📶 Chico's .....24
- Chili's Grill & Bar.....41
- Mediterranean Bistro, G22 Café, Yujo Community Center.....30
- Rickenbacker's, Kanto Lodge.....21
- 📶 Rickenbacker's, Enlisted Club .....46
- 📶 Rise & Grind .....73
- Route 16.....25
- Samurai Café/Flight Kitchen .....28
- 📶 Sunrise Bakery.....49

## 374 FSS FACILITIES

- Aero Club/Flight Training.....74
- 📶 Arts & Crafts Center.....29
- Auto Hobby Shop .....62
- Building 316.....34
  - Civilian Personnel
  - Education & Training Section
  - FSS Training Institute
  - Military Personnel Section/Customer Support
  - NAF HR
  - Plans Readiness/Mortuary Affairs
- 📶 Enlisted Club .....45
  - Family Child Care Office.....1
  - ITT Pickup Point.....13
- Kanto Lodge .....22
- 📶 Kibo CDC .....67
- Library.....44
- 📶 Marketing/Horizons Magazine .....16
- Military & Family Readiness Center.....40
- 📶 Narita/Haneda/New Sanno Shuttle Pickup/Drop-Off .....22 & 75
- Natorium.....68
- 📶 Officers' Club.....23
- 📶 Outdoor Recreation .....42
  - Pet Care Center.....64
  - Post Office.....35
  - POV Resale Lot.....26
- Professional Development .....80
  - Airman Leadership School
  - Career Assistance Advisor
  - First Term Airman Center
- Sakana Outdoor Pool .....2
- Samurai Fitness Center.....43
  - MX Nutri Shop
- Samurai Training Grounds.....84
- Skate Park .....72
- Taiyo Community Center.....4
- 📶 Teen Center.....69
- 📶 Temporary Lodging Facility.....75
- Tomodachi Lanes Bowling Center.....19
- 📶 Vehicle Operations/Car Wash .....11
- Wakamono School-Age Care .....6
- Yokota Golf Center.....65
- 📶 Youth Center.....66
- 📶 Yujo Community Center.....30
  - ITT (Information, Tickets & Travel)
  - Night Flight Travel Agency
  - Williams Technical Service Insurance
- Yume CDC.....48
- Tama Golf & Lodge
- 📶 Wi-Fi areas.

## OTHER PLACES OF INTEREST

- AAFES Garage.....10
- AAFES Movie Theater.....77
- AAFES Warehouse .....60
- Airman's Attic.....17
- 📶 AMC Terminal.....12
  - Burger King.....36
  - Car Rental/Key Copying .....14
  - Community Bank/Navy Federal Credit Union.....33
  - Dental & Mental Health Clinics .....78
  - Salons.....18
  - East Chapel.....70
  - Finance Office.....27
  - Fire Stations .....9
  - Friendship Chapel .....32
  - Furniture Management Office.....54
  - Hospital.....76
  - Housing Office.....50
  - Japanese Convenience Store .....82
  - Japanese Dining Hall .....52
  - JK Mendel Elementary School.....71
  - Laundromat.....15
  - Maintenance Office .....83
  - Pass & ID Office.....81
  - Police Station (Security Forces) .....39
  - Red Cross .....40
  - U-Fix-It.....51
  - Thrift Shop.....3
  - USO.....30
  - Veterinary Clinic.....55
  - Visitor Center.....37
  - WIC Office.....58
- 📶 YCC (AAFES Food Court/Barber Shop/BX/Dry Cleaning/Commissary/Military Clothing Sales/Salon) .....38
- Yokota High School.....57
- Yokota Middle School.....56
- Yokota West Elementary School.....8



East Fitness Loop 3mi/5km	•••
West Fitness Loop 1.4mi/2.2km	•••
Lodging Fitness Loop 4mi/6.5km	•••

## OVERRUN ROADS OPERATION HOURS

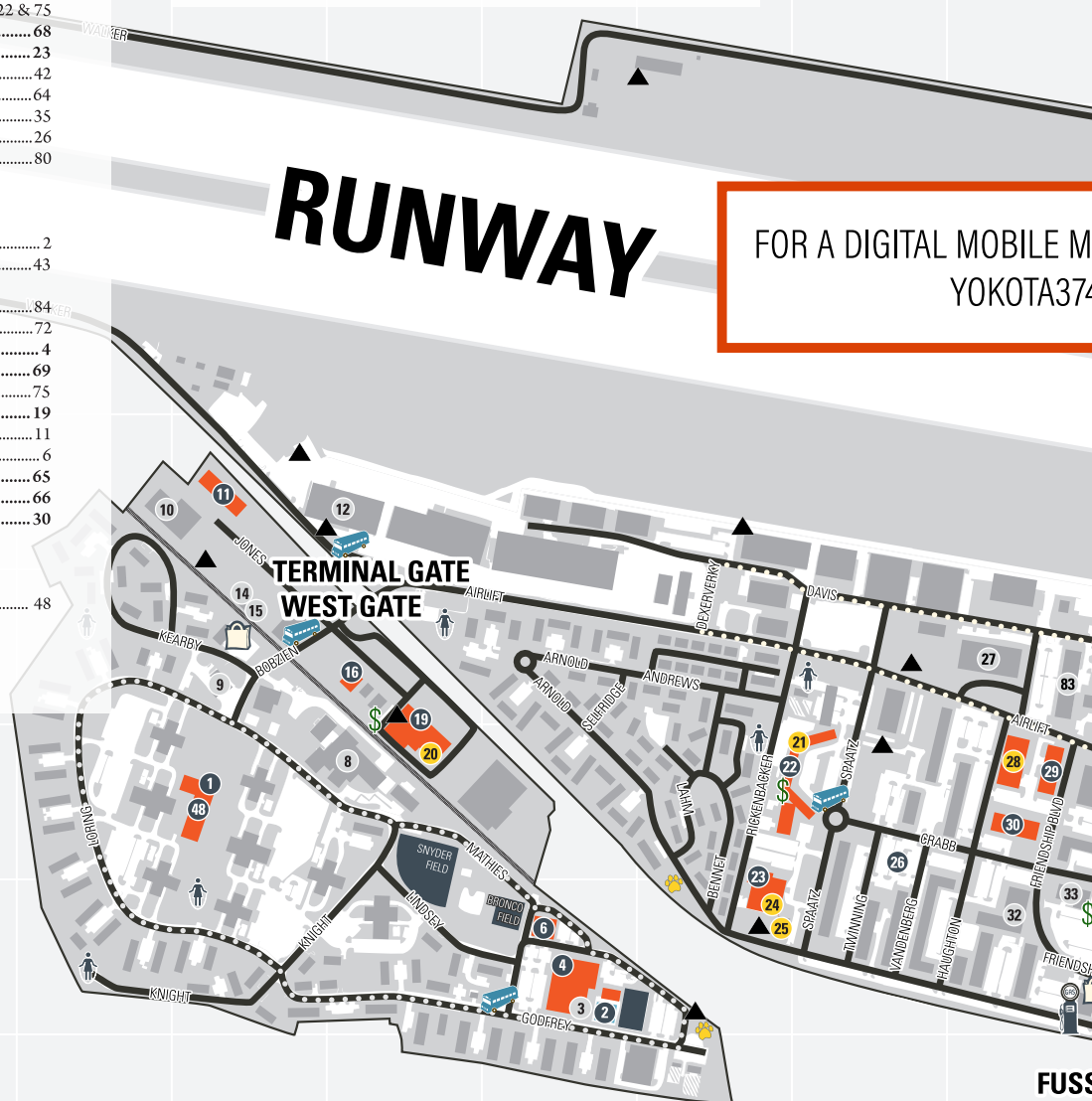
### SOUTH

Open 24 Hours

### NORTH





Closed

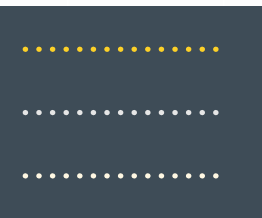
North overrun road closure includes bike/jogging path.



FOR A DIGITAL MOBILE M  
YOKOTA374

# FORCE SUPPORT FACILITY GUIDE

-  Gas Station
-  ATM
-  Dog Park
-  Designated Tobacco Area



YOKOTA  
AIR BASE

SEE MAP, CHECK OUT  
[FA374FSS.COM/MAP](http://FA374FSS.COM/MAP)

## GATE OPERATION HOURS

- EAST GATE**  
Sun-Thu - 5 a.m.-10 p.m.  
Fri-Sat - 5-1 a.m.
- FUSSA GATE**  
Everyday - 6-1 a.m.  
Through Traffic - 6 a.m.-1 a.m.
- VISITOR CENTER**  
Mon-Fri - 3 p.m.-10 p.m.  
Sat-Sun - 8 a.m.-10 p.m.
- TERMINAL & WEST GATE**  
Sun-Sat - 24 Hours  
Visitors who depart Narita on the 7 p.m. shuttle will have their passes issued at the Terminal Gate.
- SUPPLY GATE**  
Mon-Fri  
Pass & ID - 7:30 a.m.-3 p.m.  
Vehicle Traffic - 6 a.m.-6 p.m.  
Pedestrian Traffic - 6 a.m.-10 p.m.  
Closed Weekends and Japanese End of Year Holidays.

## HOLIDAYS & FAMILY DAYS

- EAST & FUSSA GATE**  
Pedestrian & Vehicle Traffic  
6 a.m.-10 p.m.
- VISITOR CENTER**  
8 a.m.-10 p.m.
- TERMINAL & WEST GATE**  
24 Hours
- SUPPLY GATE**  
Pedestrian & Vehicle Traffic  
6 a.m.-6 p.m.  
Vehicle Search Pit - 6 a.m.-2 p.m.

# DIRECTORY OF SERVICES

FAM PACAF Family Down Day / EXR Exercise / HOL Holiday

## AERO CLUB/FLIGHT TRAINING

225-8988 • Bldg. 4304  
(Ashiya TLF Tower)  
Tue-Sat 9 a.m.-5 p.m.  
Sun/Mon/Hol Closed  
Fam/Exr Normal

## ARTS & CRAFTS CENTER

225-7837 • Bldg. 334  
Tue-Sat 9:30 a.m.-6 p.m.  
Sun/Mon/Hol Closed  
Fam/Exr Normal

## AUTO HOBBY SHOP

225-7623 • Bldg. 4086  
Sun-Sat\* 10 a.m.-6 p.m.  
Fam/Exr Normal  
Hol Closed

## YUME CHILD DEVELOPMENT CENTER

225-8810 • Bldg. 3015  
Mon-Fri 6:30 a.m.-5:30 p.m.  
Exr Normal  
Sat/Sun/Hol/Fam Closed

## CIVILIAN PERSONNEL

225-3901 • Bldg. 316 • Rm. 217  
Employee Relations • 225-3916  
Allowances • 225-3906  
Mon-Fri 7:30 a.m.-3 p.m.  
Sat/Sun/Hol Closed  
Fam/Exr Normal

## EDUCATION & TRAINING CENTER

Education Services • 225-4207  
Bldg. 316  
Mon-Tue 8 a.m.-3 p.m.  
Wed 8 a.m.-12 p.m.  
Thu-Fri 8 a.m.-3 p.m.  
Sat/Sun/Hol/Fam Closed

## ENLISTED CLUB

227-8820 • Bldg. 2066  
Barber Shop • 227-8829  
Mon-Sat (Incl. Exr) 9:30 a.m.-5:30 p.m.  
Sun/Hol Closed  
Fam Normal  
Business Office & Catering  
Mon-Fri 8 a.m.-5 p.m.  
Sat/Sun/Hol Closed  
Fam/Exr Normal  
Cashiers Cage  
Mon-Sun 10 a.m.-8 p.m.  
Hol Closed  
Fam/Exr Normal  
Shogun Lounge  
Sun-Thu 4-10 p.m.  
Fri 4 p.m.-1 a.m.  
Sat 5 p.m.-1 a.m.  
Hol Closed  
Fam/Exr Normal

## FAMILY CHILD CARE OFFICE

225-8810 • Bldg. 3015  
Mon-Fri 8 a.m.-5 p.m.  
Sat/Sun/Hol/Fam Closed  
Exr Normal

## FLIGHT KITCHEN

225-9006 • Bldg. 335  
Daily Open 24 Hours

## FSS TRAINING INSTITUTE

225-8105/8106 • Bldg. 316  
Rm. 132, 133, 141 & 144  
DSN FAX: 225-2060  
Mon-Fri 7:30 a.m.-4:30 p.m.  
Sat/Sun/Hol Closed  
Fam/Exr Normal

## INFORMATION, TICKETS & TRAVEL

227-7083 • Bldg. 327  
Local Tours Desk: 227-7084  
Mon-Fri 10 a.m.-6 p.m.  
Sat 10 a.m.-3 p.m.  
Sun/Hol Closed  
Fam/Exr Normal  
Night Flight Travel Agency  
225-6993/6999  
Mon-Fri 10 a.m.-6 p.m.  
Sat 10 a.m.-3 p.m.  
Sun/Hol Closed  
Fam/Exr Normal

## KANTO LODGE

224-2002 • Bldg. 15  
Daily Open 24 Hours

## LIBRARY

225-7490 • Bldg. 617  
Mon-Thu 10 a.m.-8 p.m.  
Fri-Sun 10 a.m.-5 p.m.  
Hol Closed  
Fam/Exr Normal

## MARKETING

225-3308 • Bldg. 1295  
Mon-Fri 7:30 a.m.-4:30 p.m.  
Sat/Sun/Hol/Fam Closed  
Exr Normal

## MILITARY & FAMILY READINESS CENTER

225-8726 • Bldg. 535  
Mon-Thu 8 a.m.-4 p.m.  
Fri 9 a.m.-4 p.m.  
Every Last Fri Closed  
Sat/Sun/Hol Closed  
Fam Closed

## MILITARY PERSONNEL FLIGHT CUSTOMER SUPPORT

225-8062 • Bldg. 316  
Mon-Fri (Walk-Ins) 8 a.m.-10 a.m.  
Mon-Fri (Appointments Only) 12-3 p.m.  
Mon-Fri (Emergency Services) 8 a.m.-3 p.m.  
Every Third Thu Closed  
Sat/Sun/Hol/Fam/Exr Closed

## NAF HR

225-3920 • Bldg. 316 • Rm. 217  
374FSS.HRO@us.af.mil  
Mon-Fri 7:30 a.m.-3 p.m.  
Sat/Sun/Hol Closed  
Fam/Exr Normal

## NATATORIUM

225-6133 • Bldg. 4338  
Front Desk  
Mon-Fri 9 a.m.-6 p.m.  
Sat 10:30 a.m.-3 p.m.  
Sun/Hol Closed  
Fam/Exr Normal  
Pool  
Mon-Fri 5 a.m.-8 p.m.  
Hol Closed  
Fam/Exr Normal  
Sakana Pool  
\*Opens Memorial Day weekend  
Thu-Mon 10 a.m.-6 p.m.  
Tue/Wed Closed

## OFFICERS' CLUB

225-8526 • Bldg. 31  
Business Office  
Mon 8 a.m.-3 p.m.  
Tue-Sat 8 a.m.-5 p.m.  
Sun/Hol Closed  
Exr Normal  
Cashiers Cage • 225-8343/8526  
Tue-Fri 10 a.m.-9 p.m.  
Sat 5-9 p.m.  
Sun/Mon/Hol Closed  
Fam 5-9 p.m.  
Exr Normal  
Catering Office • 225-8342  
Tue-Fri 10 a.m.-6 p.m.

## SAMURAI LOUNGE

Tue-Sat 5-10 p.m.  
Sun/Hol Closed  
Fam/Exr Normal

## OUTDOOR RECREATION/ EQUIPMENT RENTAL

225-4552 • Bldg. 564  
Tue-Fri 9:30 a.m.-6 p.m.  
Sun/Mon/Hol Closed  
Sat 8 a.m.-5 p.m.  
Fam/Exr Normal

## PET CARE CENTER

225-8906 • Bldg. 4066  
Front Desk  
Mon-Fri 9:30 a.m.-5 p.m.  
Sat 9:30 a.m.-3 p.m.  
Sun 11 a.m.-5 p.m.  
Hol Closed  
Fam/Exr Normal

## POST OFFICE

225-9383 • Bldg. 410  
Parcel Pick-Up Window  
Mon-Sat 10 a.m.-5:30 p.m.  
Sun Closed  
Customer Service  
Mon-Fri 10 a.m.-5:30 p.m.  
Sat-Sun Closed  
Outbound Mail  
Tue-Sat 10 a.m.-5 p.m.  
Sun-Mon Closed  
Official Mail Center  
Mon-Fri 10 a.m.-3 p.m.  
Sat-Sun Closed  
Hol/Fam Closed

## PROFESSIONAL DEVELOPMENT CENTER

ALS: 225-8331  
DA: 225-7829  
FTAC: 225-9525  
Bldg. 580  
Mon-Fri 7:30 a.m.-4:30 p.m.  
Sat/Sun/Hol/Fam Closed  
Exr Normal

## SAMURAI FITNESS CENTER & ANNEX

225-8889/8890 • Bldg. 689/665  
Mon-Fri 5 a.m.-9 p.m.  
Sat/Sun/Fam 10 a.m.-6 p.m.  
Hol Closed  
MX Nutri Shop • 225-9893  
Mon/Wed/Fri 6:30 a.m.-2 p.m.,  
4-8 p.m.  
Tue/Thu 9 a.m.-2 p.m.,  
4-8 p.m.  
Sat/ Sun/Fam 10 a.m.-5 p.m.

## SCHOOL-AGE CARE

225-6397 • Bldg. 3258  
KIBO - 225-4199 • BLDG 1592  
Business Office 6:30 a.m.-5:30 p.m.  
Care  
Mon/Wed/Thu/Fri 6:30-8 a.m.,  
2-5:30 p.m.  
Tue 6:30-8 a.m.,  
1-5:30 p.m.  
Sat/Sun/Hol/Fam Closed  
WAKAMONO - 225-6397 • BLDG 3258  
Business Office 6:30 a.m.-5:30 p.m.  
Care  
Mon/Wed/Thu/Fri 6:30-7:50 a.m.,  
2-5:30 p.m.  
Tue 6:30-7:50 a.m.,  
1-5:30 p.m.  
Sat/Sun/Hol/Fam Closed

## TAIYO COMMUNITY CENTER

225-6955 • Bldg. 3260  
Mon-Fri 10 a.m.-8 p.m.  
Sat 8 a.m.-4 p.m.  
Sun/Hol Closed  
Fam/Exr Normal

## TAMA HILLS GOLF COURSE

042-374-2811  
18-Hole Golf Course  
Sat-Sun (Hol/Fam/Exr) Open  
Pro Shop  
Sat-Sun 6:15 a.m.-4 p.m.  
Hours subject to change due to weather conditions.

## TAMA HILLS RESORT & RECREATION

227-5230

**Country Store**

Mon	10 a.m.–2 p.m.
Tue	Closed
Wed–Thu	10 a.m.–1:30 p.m., 2:30–6 p.m.
Fri	10 a.m.–8 p.m.
Sat–Sun	8 a.m.–8 p.m.

**Hillcrest Lounge**

Mon/Tue	Closed
Wed–Sun	1–9 p.m.

**Reservation Desk**

Mon	12 a.m.–5 p.m.
Tue	Closed
Wed	8 a.m.–12 a.m.
Thu–Sun	24 Hours

**Tama ODR**  
227-5248

**March–October**

Sun	8 a.m.–6 p.m.
Mon	8 a.m.–2 p.m.
Tue	Closed
Wed–Thu	8 a.m.–5 p.m.
Fri–Sat	8 a.m.–7 p.m.

**November–February**

Mon	8 a.m.–2 p.m.
Tue	Closed
Wed–Sun	8 a.m.–5 p.m.

## TEEN CENTER

225-6793 • Bldg. 4313

**Business Office**

Mon–Thu	12–7 p.m.
Fri	12–9 p.m.
Sat/Sun/Hol/Fam	Closed
Exr	Normal

**Recreation Center**

Mon–Thu	3–7 p.m.
Fri	3–9 p.m.
Sat/Sun/Hol/Fam	Closed

## TOMODACHI LANES BOWLING CENTER

225-7191 • Bldg. 1213

Sun–Thu	11 a.m.–10 p.m.
Fri–Sat	11 a.m.–11 p.m.
Hol/Exr	11 a.m.–8 p.m.
Fam	Normal

## UNITE

225-1433 • Bldg. 327

Mon–Fri	8:30 a.m.–4 p.m.
Sat/Sun/Hol/ Fam/ Exr	Closed

## VEHICLE OPERATIONS

225-7720 • Bldg. 1290

**Business Office**

Mon–Fri	6 a.m.–5 p.m.
Sat/Sun/Hol	Closed
Fam/Exr	Normal

**Car Wash/Self-Service**

Daily (Apr–Oct)	6:30 a.m.–5 p.m.
Daily (Nov–Mar)	7 a.m.–5 p.m.

**SHUTTLES**  
See Pg. 27

**U-DRIVE PICKUP/DROP-OFF ONLY**

Daily	6:30 a.m.–4:30 p.m.
-------	---------------------

## WILLIAMS TECHNICAL SERVICE INSURANCE

**Primary Office**  
Bldg. 993, Pass & ID  
225-2741

Mon–Fri	8 a.m.–3:30 p.m.
Sat/ Sun/Hol Fam	Closed
Friendship Festival	Closed

**Satellite Office**  
Bldg. 327, Yujo Community Center  
225-2742

From Off Base: 042-530-0799  
03-6868-2363

Mon–Fri	9 a.m.–5 p.m.
Sat/Fam	10 a.m.–2 p.m.
Sun/Hol	Closed
Exr	Normal

## YOKOTA GOLF CENTER

225-8815 • Bldg. 4010

**Clubhouse/Pro Shop**

Sat–Sun	7:30 a.m.–6 p.m.
---------	------------------

**Driving Range**

Mon/Wed–Sun	7 a.m.–8:30 p.m.
Tue	11 a.m.–8:30 p.m.

**9-Hole Golf Course**

Sat–Sun	7:30 a.m.–Sunset
---------	------------------

Hours subject to change due to weather conditions.

## TSUBASA YOUTH CENTER

225-7441 • Bldg. 1591

**Business Office**

Mon–Fri	12–6 p.m.
Sat/Sun/Hol/Fam	Closed
Exr	Normal

**Recreation Center**

Mon/Wed–Fri	2–6 p.m.
Tue	1–6 p.m.
Sat/Sun/Hol/Fam	Closed

## YOUTH SPORTS

225-4199 • Bldg. 1592

## YUJO COMMUNITY CENTER

225-7713 • Bldg. 327

Mon–Sat	9 a.m.–7 p.m.
Sun/Hol	Closed
Fam	10 a.m.–6 p.m.
Exr	Normal

# RESTAURANTS

■ BREAKFAST / ■ LUNCH / ■ DINNER

## ■ BANGKOK EXPRESS

227-5811 • Bldg. 1213  
(Tomodachi Lanes)

Sun–Thu	11 a.m.–9:30 p.m.
Fri–Sat	11 a.m.–10:30 p.m.
Hol	11 a.m.–8 p.m.
Fam/Exr	Normal

## ■ CHARLIE'S

227-8837/8820 • Bldg. 2066

**Breakfast**

Mon–Fri	6:30–10 a.m.
Sat	7 a.m.–1 p.m.
Sun	9 a.m.–1 p.m.

**Lunch**

Mon–Fri	11 a.m.–1:30 p.m.
Sat	7 a.m.–1 p.m.
Sun	9 a.m.–1 p.m.

**Dinner**

Mon–Wed	5–8 p.m.
Thu–Sun	Closed
Fam/Exr	Normal

Charlie T's is open for a la carte menu on family days 7 a.m.–1 p.m. only.

## ■ CHICO'S CHOP HOUSE & SEAFOOD GRILL

225-9425 • Bldg. 31

**Breakfast**

Mon–Fri	7–10 a.m.
Sat/Sun/Fam	7 a.m.–12 p.m.
Hol	Closed

**Lunch (ACTION STATION)**

Tue–Fri	11 a.m.–1:30 p.m.
Sat/Sun/Hol/Fam	Closed
Exr	Normal

**Dinner**

Tue–Sat	5–9 p.m.
Sun/Mon/Hol/Fam	Closed
Fam/Exr	Normal

**CATERING OFFICE**

Tue–Fri	10 a.m.–5 p.m.
---------	----------------

## ■ CHILI'S GRILL & BAR

1 (210)-547-9947 • Bldg. 536

Sun–Thu	11 a.m.–9 p.m.
Fri/Sat	11 a.m.–10 p.m.
Hol	4–9 p.m.
Fam/Exr	Normal

## ■ KUJI DINING ROOM

227-5230  
(Tama Hills Rec Area)

Mon	8 a.m.–2 p.m.
Tue	Closed
Wed	11 a.m.–8 p.m.
Thu–Fri	8 a.m.–2 p.m., 4–8 p.m.
Sat–Sun	7 a.m.–2 p.m., 4–8 p.m.

## ■ MEDITERRANEAN BISTRO

225-8293 • Bldg. 327

**Breakfast**

Mon–Fri	6:30 a.m.–10:30 a.m.
---------	----------------------

**LUNCH**

Mon–Fri	10:30 a.m.–1:30 p.m.
Sat/Sun/Hol	Closed
Fam/Exr	Normal

## ■ RICKENBACKER'S COFFEE SHOP\*

Kanto Lodge • Bldg. 15

Mon–Fri	6 a.m.–6 p.m.
Sat–Sun	6 a.m.–3 p.m.
Hol/Fam	7 a.m.–1 p.m.
Exr	Normal

Enlisted Club • Bldg. 2066

**Closed for renovations. (See below for details.)**

## ■ RISE & GRIND

225-9551 • Bldg. 4330

**Breakfast**

Mon–Fri	6:30–10:30 a.m.
Hol	Closed

**Lunch**

Mon–Fri	10:30 a.m.–2 p.m.
Hol	Closed

## ■ ROUTE 16

225-8685 • Bldg. 35

**Breakfast**

Mon–Fri	7–10 a.m.
Sat/Sun/Fam	7 a.m.–12 p.m.
Exr	Normal

**Lunch & Dinner**

Mon–Fri	11 a.m.–8 p.m.
Sat/Fam	12–8 p.m.
Sun	12–7 p.m.
Hol	Closed
Exr	Normal

## ■ SAMURAI CAFÉ DINING FACILITY

225-8870 • Bldg. 335

**Midnight**

Daily	10 p.m.–12 a.m.
-------	-----------------

**Breakfast**

Mon–Fri	5:30–8 a.m.
Sat/Sun/Fam	6:30–9 a.m.

**Brunch**

Hol	7 a.m.–1 p.m.
-----	---------------

**Lunch**

Daily	11 a.m.–1 p.m.
-------	----------------

**Dinner**

Daily	5–8 p.m.
-------	----------

## ■ G22 CAFÉ

225-6612 • Bldg. 327

Tue–Fri	8 a.m.–2 p.m.
Sat	9 a.m.–2 p.m.
Sun–Mon	Closed

## ■ SUNRISE BAKERY\*

225-8917 • Bldg. 621

Mon–Fri/Fam	6:30 a.m.–12 p.m.
Sat	7–11:30 a.m.
Sun/Hol	Closed
Exr	Normal

## ■ TAMA GOLF COURSE TEE HOUSE RESTAURANT

224-3426/7777 • Bldg. 1010

Mon	Closed
Tue–Sun	6 a.m.–4:30 p.m.

**BREAKFAST**

6 a.m.–10:30 a.m.
-------------------

**LUNCH**

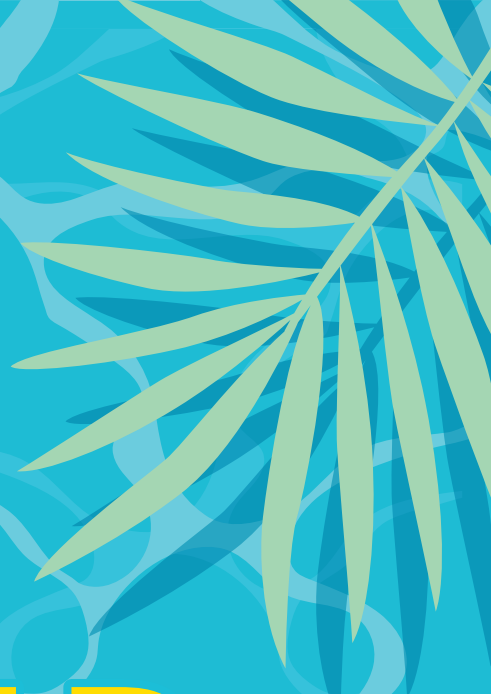
10:30 a.m.–4:30 p.m.
----------------------

Hours subject to change due to weather conditions.

\*The EClub Rickenbackers is temporarily closed for renovations. Check our website for important information regarding Sunrise Bakery.

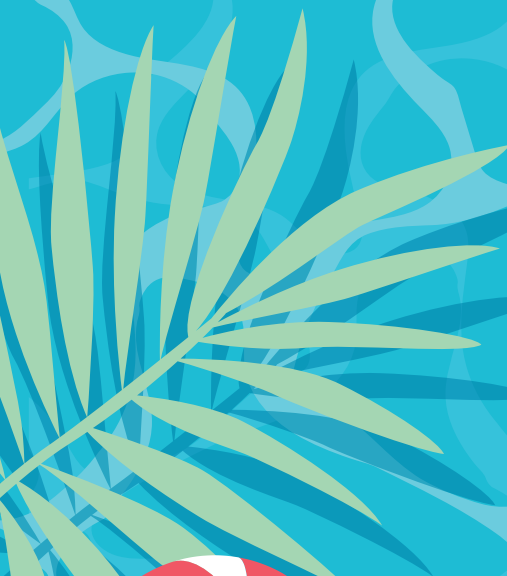
For information on closures and updates, scan here:





DIVE INTO

# SUMMER



SAT • 13 JUN

10 A.M. – 6 P.M.

SAKANA OUTDOOR POOL

FREE • ALL AGES



Stay cool at the Sakana Outdoor Pool!  
Enjoy music while the kids tackle the  
inflatable obstacle course.



No Federal endorsement of sponsors intended.